



THE LIMEHOUSE LAMP  
COMPANY LTD

FINE ENGLISH LIGHTING

---

INTERIOR LIGHTING



# The Limehouse Lamp Company Ltd

Founded in 1971 The Limehouse Lamp Company started by faithfully restoring and replicating original antique lighting from our Victorian Pub premises, in London's East End area of Limehouse. With St Catherine's Dock on our doorstep, the modern Docklands of today was non-existent. No high rise office buildings, just the historic London, dating back centuries and most of Victorian London's architecture and docks still in existence. From these humble beginnings recreating Victorian carriage lamps, our range of products grew to the large collection of indoor and outdoor lighting we produce today.

All our products are hand made with the majority of work done in our workshops at our Sussex based premises. Every item is built and hand finished by our craftsmen, who have over 100 years of combined experience making traditional lighting. Working in only solid brass and copper, each item is soldered by hand using traditional methods. Heavy parts are all cast in sand and finished by hand giving our lights the artisan quality of original pieces, with no two items being exactly the same.

A large number of our range of products are reproduced from original antiques and our hand finishing processes and traditional manufacturing methods give our lights a unique quality that makes each item feel original.

Our collections combine interior and exterior lighting covering periods of over 200 years from the early 1700's to the 1930's offering designs of grandeur and style. Our historic ranges of Industrial and Nautical Lighting offer replica lighting used throughout Victorian and Edwardian daily life. From the railways, ships and even taverns of emerging industrial England and America.

Our lighting is sold throughout the world and has been used in stately homes, castles, public houses, museums, films and even in the mystical world of Harry Potter at Universal Studios. We have lights to suit almost any period property and are accredited to wire for any country on the globe.

Please feel free to contact our experienced team for advice or any information you may need.

We Look forward to hearing from you.





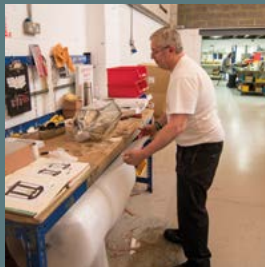
## Where the Magic Happens



OUR 8000 SQ/FT FACILITY NESTLED IN THE SUSSEX SOUTH DOWNS



IT TAKES APPROXIMATELY 3 YEARS TO TRAIN A CRAFTSMAN TO BUILD OUR LIGHTS.



EACH ITEM IS BUILT, WIRED, FINISHED, TESTED AND PACKED WITH PRIDE.

# IP Ratings Explained



Bathroom use for EU/UK installation in Zone 2 of a Bathroom. Splash proof. Uses G9 Bulbs.



Exterior Use Rain Water up to 60 degrees from the vertical (Suitable outside of a splash zone). 1.2m from the ground.



Adapted for EU/UK exterior use, can be used for installation in Splash Zones. Uses G9 Bulbs.



Hanging Lights Suitable for use in a covered area such as a porch.

Please consult a qualified electrician for advice on suitable IP rating required.

## Recommended Bulb Shapes



GLS  
Shape

US TYPE  
(A19)



CANDLE  
Shape US

TYPE  
(B9)



GOLFBALL  
Shape US

TYPE  
(A15)



PYGYM  
Shape US

TYPE  
(T8)



G9  
Shape

US TYPE  
(T3.5)



GU10  
Shape

US TYPE  
(MR16)



T45  
Shape

US TYPE  
(T45)

## Other Icons



Standard chain length supplied with product. Please specify if extra chain is required.



Available in UL/CSA specifications for US and Canadian markets.



Not Available in UL/CSA specifications for US and Canadian markets.



# Antique Finishes

Antique natural finishes are our most popular for our ranges. We finish each item individually by hand. The Distressed finish (AB) is perfect for making an item look like an original piece. Products finished this way have a mellow appearance making them feel as if they were produced decades ago. Old Antique (ANT) gives a very aged appearance similar to wrought iron in colour. This finish works brilliantly on old stone or brick work and will look perfectly in place on any period property. With Antique Relief (ANT/REL) finish, our experienced craftsmen will relief polish features to your requirements, in order to highlight details you may wish to stand out (Note: Special order).



## Distressed Finish

Order Code Suffix (AB)

---

The item is degreased and soaked in a chemical that physically ages the metal. It is then polished back to reveal the metal beneath. This finish will mellow with age and requires no cleaning or maintenance to keep its appearance. Recommended for interior and exterior use.

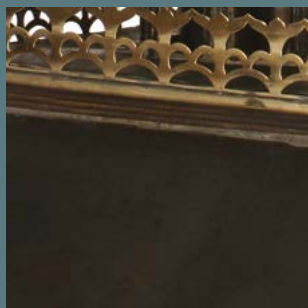


## Old Antique Finish

Order Code Suffix (ANT)

---

The item is degreased and soaked in a chemical that physically ages the metal. The finish is a greyish bronze and requires no cleaning or maintenance to keep its appearance. The fitting will look as if it has tarnished for decades. Recommended for interior and exterior use.



## Antique Relief Finish

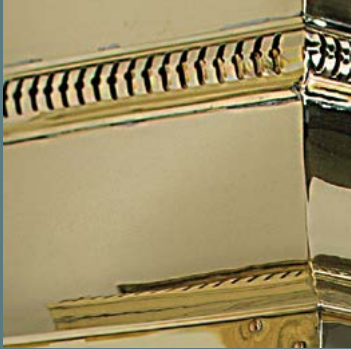
Order Code Suffix (ANT/REL)

---

As Antique, (ANT) however we relief polish details of the individual light to give a true custom appearance. (Special order - please contact us to discuss).

# Polished Finishes

Polished natural finishes will patina in time and require polishing with brass polish if a shiny new appearance is desired. We feel however, leaving the item to mellow to its natural colour improves the look of our products. We can lacquer our products to keep their new appearance and will only require routine cleaning.



## Polished Lacquered Finish

Order Code Suffix (PB)

---

The item is polished and lacquered to obtain a bright and glossy appearance. Requires the occasional clean with a damp cloth and is suitable for interior lights or external products. Please note: We do not recommend a lacquered finish on external lights near coastal areas as salt degrades the lacquered finish very quickly.



## Un-Lacquered Natural Finish

Order Code Suffix (PBUL)

---

The item is polished only and will gradually tarnish and mellow in colour. Alternatively cleaning with brass polish will retain a bright finish. Recommended for interior and exterior use.

# Plated Finishes

Most designs are available in polished nickel (N) and are shown on each product page where this is applicable. Nickel patinates in the same way as silver and can be polished easily to keep a bright appearance (much like cleaning the family silver). However it does mellow to a lovely warm classical appearance. Bronze finish (BZ) is available as an option on Gatsby lights only.



## Nickel (Unlacquered)

### Order Code Prefix (N)

---

The item is de-greased and soak cleaned, followed by an electric clean bath to remove any further impurities that may cause de-lamination. The item is then Nickel plated with a minimum of 10 microns of Nickel (more than twice the minimum requirement for BSEN-12540). The product is then polished ready for use.



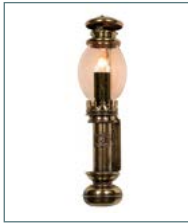
## Bronze

### Order Code Suffix (BZ)

---

The item is degreased and soaked in a chemical that bronzes the metal. It is then cleaned and lacquered to achieve a natural bronze finish. Requires the occasional clean with a damp cloth and is not suitable for exterior use.

Note: Nickel plated items are supplied un-lacquered which will dull over time. The items can be easily re-polished to an original state using metal polish. However if you require fittings lacquered (only recommended for interior use) please specify lacquered finish when ordering.



(402) - Page 16



(722) - Page 17



(437) - Page 18



(437W) - Page 19



(440) - Page 20



(440L) - Page 21



(414) - Page 22



(448) - Page 23



(448W) - Page 24



(449) - Page 25



(450) - Page 26



(451) - Page 27



(452) - Page 28



(719G) - Page 29



(719P5G) - Page 30



(719P3P5G) - Page 31



(732) - Page 32



(732A) - Page 33



(733) - Page 34



(733A) - Page 35



(748) - Page 36



(749) - Page 37



(750) - Page 38



(751) - Page 39



(752) - Page 40



(650) - Page 41



(707) - Page 42



(707T) - Page 43



(707P3) - Page 44



(730) - Page 45



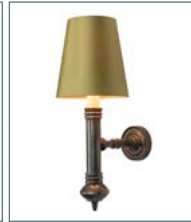
(730P6) - Page 46



(730G) - Page 47



(730P6G) - Page 48



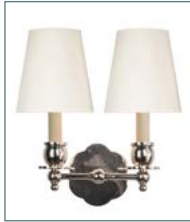
(710) - Page 49



(710T) - Page 50



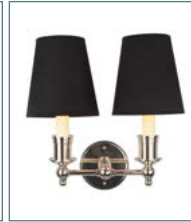
(713) - Page 51



(713T) - Page 52



(711) - Page 53



(711T) - Page 54



(712) - Page 55



(712T) - Page 56



(711D) - Page 57



(711DT) - Page 58



(712D) - Page 59



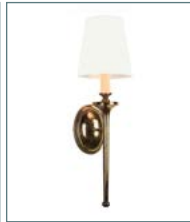
(712DT) - Page 60



(721) - Page 61



(721T) - Page 62



(721B) - Page 63



(721BT) - Page 64



(721G) - Page 65



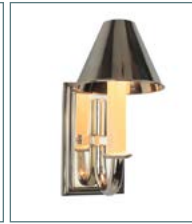
(721TG) - Page 66



(721BG) - Page 67



(721BTG) - Page 68



(726) - Page 69



(723) - Page 70



(723T) - Page 71



(820) - Page 72



(821) - Page 73



(822) - Page 74



(823) - Page 75



(824) - Page 76



(825) - Page 77



(826) - Page 78



(827) - Page 79



(828) - Page 80



(829) - Page 81



(830) - Page 82



(831) - Page 83



(801) - Page 84



(801A) - Page 85



(802) - Page 86



(803) - Page 87



(803A) - Page 88



(812) - Page 89



(814) - Page 90



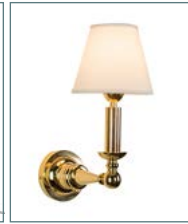
(724) - Page 91



(724D) - Page 92



(724T) - Page 93



(725) - Page 94



(816W) - Page 95



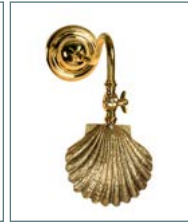
(813ASW) - Page 96



(813ADW) - Page 97



(816T) - Page 98



(PLSH) - Page 99



(SHW1) - Page 100



(SHW2) - Page 101



(850) - Page 102



(850A) - Page 103



(850B) - Page 104



(900S) - Page 105



(900M) - Page 106



(900L) - Page 107



(900SQ) - Page 108



(900RS) - Page 109



(900RL) - Page 110



(901S) - Page 111



(901M) - Page 112



(901L) - Page 113



(901SQ) - Page 114



(901RS) - Page 115





(901RL) - Page 116



(727P) - Page 117



(727W) - Page 118



(727F) - Page 119



(729P) - Page 120



(729W) - Page 121



(729F) - Page 122



(BL13) - Page 123



(BL25) - Page 124



(BT9) - Page 125



(BT13) - Page 126



(BT24) - Page 127



(815) - Page 128



(815C3) - Page 129



(815B3) - Page 130





Please enjoy our Timeless Interior Collections, ranging from Classic Victorian & Edwardian Gasoliers, through to 17th Century Cast Gothic Pieces. All our Interior lights are hand made and hand finished to order, we can accommodate any electrical standard in the world. Products traditionally take between 3 to 5 weeks to make with Nickel taking slightly longer due to plating process. We strive to recreate the ambience and timeless quality of the original antique pieces. We are certain that you will appreciate owning one of our classic reproduction lights.



Featured Model 440L (PBUL) Page 21 *Private Client – Pennsylvania USA*



Featured Model BT24 (PB) Page 127 *Private Client – Surrey – England*



Featured Models 650 (PB) Page 41. *Photo Courtesy of Divvy House Interiors– Glencoe, Illinois USA*



Featured Model 449 (PBUL) Page 25. Photo Courtesy of no7\_is\_home - Instagram



Featured Model 721BG (N) Page 67. Photo Courtesy of no7\_is\_home - Instagram



Featured Model 733A (AB) Page 35. Photo Courtesy of Maison Inc - Portland, Oregon USA



Featured Models 492B (AB) & 821 (AB) Page 73. Photo Courtesy of Divvy House Interiors – Glencoe, Illinois



Featured Models 821 (PB) Page 73. Private Client – Derbyshire, England



Featured Model 723T (N) Page 71 Private Client - Brighton, England

Finishes  
Available for  
this Collection



ANT



AB



PBUL



PB



## Berth Lamp C.1890 (402)



**AB  
SHOWN**

Berth Lamp C.1870 handmade of solid brass with a copper label, complete with old glass chimney. One of the first lights we re-produced, the Berth Lamp is a replica of a candle lamp used aboard the Mid-Victorian White Star line steam ship RMS Oceanic. These small lights were used in the second class cabins of the ship. Our Berth Lamps are often mistaken as original antiques and sold in auctions globally. Perfect for adding a small decorative piece to your period scheme.

**Wattage:** 1 x 25w SES  
**Height:** 325mm / 12.8"  
**Width:** 80mm / 3.1"  
**Depth:** 100mm / 3.9"





## Vestry Lamp (722)



Finishes  
Available for  
this Collection



ANT



AB



PBUL



PB

**ANT  
SHOWN**

**Wattage:** 1 x 40w SES  
**Height:** 280mm / 11"  
**Width:** 170mm / 6.7"  
**Depth:** 110mm / 4.3"

Vestry Lamp made of solid brass is recreated from a Spanish candle lamp originally from a Medieval Catalonian Spanish church. The Vestry lamp makes the ideal feature piece in spaces such as a wine cellar or Medieval scheme.

Finishes  
Available for  
this Collection



ANT



AB



PBUL



PB

Optional  
Available Glass



Clear



Opal



## Victoria Station Light (437)



**CLEAR  
SHOWN**

**ANT  
SHOWN**

Victoria Station Light C1930 is a replica railway station wall light from Victoria Station London. Solid brass with copper LBSCR Label - London and Brighton South Coast Railway. Available with clear or opal glass - please specify. The Victoria pendant is a replica of those installed from pre-war Victoria station platform.

Included 500mm chain and ceiling rose supplied - extra chain length available.

**Wattage:** 1 x 60w ES  
**Height:** 360mm / 14.1"  
**Width:** 355mm / 13.9"  
**Depth:** 355mm / 13.9"



## Victoria Wall Light (437W)



Finishes  
Available for  
this Collection



ANT



AB



PBUL



PB

Optional  
Available Glass



Clear



Opal

**AB  
SHOWN**

**OPAL  
SHOWN**

**Wattage:** 1 x 60w ES  
**Height:** 430mm / 16.9"  
**Width:** 355mm / 13.9"  
**Depth:** 415mm / 16.3"

Victoria Wall Lamp C1930 a replica railway station wall light from Victoria station London. Solid brass with copper LBSCR Label. Available with clear or opal glass - Please Specify. (IP44) as standard. The Victoria wall lamp is a replica of the original hanging lights from pre-war Victoria station platform. The wall light version has been adapted to keep the period charm.

Finishes  
Available for  
this Collection



ANT



AB



PBUL



PB

Optional  
Available Glass



Clear



Opal



## Paddington Pendant (440)



**OPAL  
SHOWN**

**PBUL  
SHOWN**

Paddington pendant C1890 is a replica gas railway station pendant from Paddington Station in London. Solid copper with brass detail, available with clear or opal glass. The Paddington pendant originally a gas light, has the valve mechanism replicated in brass with on/off pull chains as per the original light from Paddington Station in London. Also available in a larger diameter version.

Included 500mm chain and ceiling rose supplied - extra chain length available.

**Wattage:** 1 x 100w ES  
**Height:** 535mm / 21"  
**Width:** 375mm / 14.7"  
**Depth:** 375mm / 14.7"





## Paddington Pendant (Large) (440L)



Finishes  
Available for  
this Collection



ANT



AB



PBUL



PB

Optional  
Available Glass



Clear



Opal

**PB  
SHOWN**

**CLEAR  
SHOWN**

**Wattage:** 1 x 100w ES  
**Height:** 535mm / 21"  
**Width:** 560mm / 22"  
**Depth:** 560mm / 22"

Paddington pendant (large) C1890 is a replica gas railway station pendant from Paddington Station in London. Solid copper with brass detail, available with clear or opal glass. The Paddington pendant originally a gas light, has the valve mechanism replicated in brass with on/off pull chains as per the original light from Paddington Station in London.

Included 500mm chain and ceiling rose supplied - extra chain length available.

Finishes  
Available for  
this Collection



ANT



AB



PBUL



PB



## Stable Lamp C.1830 (414)



OPTIONAL



CANDLE

**AB  
SHOWN**

Stable Lamp made of solid brass C1830, suitable for exterior use. (IP23) as standard and also available as (IP44). This little wall lantern is an exact replica of an original antique candle lamp. The original was purchased in France and has been reproduced by The Limehouse Lamp Company for nearly 50 years. This lovely little light adds period charm to both interior and exterior spaces. Used extensively in older homes and public houses where a period style piece finishes the scheme.

**Wattage:** 1 x 60w SES  
**Height:** 295mm / 11.6"  
**Width:** 190mm / 7.5"  
**Depth:** 95mm / 3.75"



## Wheelhouse Nautical Pendant (448)



CANDLE



Finishes  
Available for  
this Collection



N



ANT



AB



PBUL



PB

Optional  
Available Glass



Clear



Frosted

**PB  
SHOWN**

**CLEAR  
SHOWN**

**Wattage:** 1 x 40w SES  
**Height:** 295mm / 11.6"  
**Width:** 205mm / 8"  
**Depth:** 205mm / 8"

Wheelhouse Nautical Pendant solid brass, supplied with clear glass, frosted glass available. The Wheelhouse Nautical lights are based upon original lights found on ships from as early as 1910. These charming pendant lights are perfect for those wanting a nautical theme in their home.

Finishes  
Available for  
this Collection



N



ANT



AB



PBUL



PB

Optional  
Available Glass



Clear



Frosted



## Wheelhouse Wall Light (448W)



CANDLE

**CLEAR  
SHOWN**

**N  
SHOWN**

Wheelhouse Wall Light C1914 in solid Brass with clear glass, frosted Glass Available, typical ships wall light as used in mechanical and service areas of ships from the late Victorian electric era through to the 1950's. Rated (IP44) is suitable for bathrooms and exterior use. This light was originally designed for the movie "Titanic" and has subsequently been used in numerous film sets including "Paddington Bear".

**Wattage:** 1 x 40w SES  
**Height:** 330mm / 13"  
**Width:** 205mm / 8"  
**Depth:** 335mm / 13.2"



## Deck Lamp (449)



Finishes  
Available for  
this Collection



N



ANT



AB



PBUL



PB

**AB  
SHOWN**

**Wattage:** 1 x 100w ES  
**Height:** 325mm / 12.8"  
**Width:** 380mm / 15.9"  
**Depth:** 380mm / 15.9"

The Deck Lamp made of solid copper with brass detail as shown. The deck lamp is a replica of a 1920's industrial light made for Cannock Mining Company. The Deck Lamp is made from solid copper with brass detail and name plate. A fantastic light to use over a kitchen island or bar. With matching, Bulkhead lights wall, pendant and counter lights from the freighter range. They are ideal for the vintage and shabby chic interiors where authentic lights are essential.

Included 500mm of chain and ceiling canopy supplied) extra chain and cable can be added.

Finishes  
Available for  
this Collection



ANT



AB



PBUL



PB



## Freighter Pendant (450)



GLS

ANT  
SHOWN

Freighter Pendant Light, made of solid copper with brass detail and cage, featuring a frosted glass diffuser and heavy copper rivets. This Industrial Victorian Pendant looks fantastic over a counter or dining table. The Freighter range of industrial lights are made from original copper lights made for The Cannock Mining Company.

Included 500mm of chain and ceiling canopy (supplied) extra chain and cable can be added.

**Wattage:** 1 x 60w ES  
**Height:** 330mm / 13"  
**Width:** 280mm / 11"  
**Depth:** 280mm / 11"



## Freighter Wall Lamp (451)



Finishes  
Available for  
this Collection



ANT



AB



PBUL



PB

**AB  
SHOWN**

**Wattage:** 1 x 60w ES  
**Height:** 370mm / 14.6"  
**Width:** 220mm / 8.7"  
**Depth:** 310mm / 12.2"

The Freighter Wall Lamp is made of solid copper with brass rivets, detail and cage, with frosted glass diffuser. The Freighter range of industrial Victorian lights are made from original copper lights made for The Cannock Mining Company. Designed to be sealed where explosive gasses may be present, these lights were made to withstand a heavy mining and industrial environment. This Light is perfect for a vintage setting with base walls and eclectic features. Other products in the range include hanging versions and bulkhead light.

Finishes  
Available for  
this Collection



ANT



AB



PBUL



PB



## Smithy's Lamp (452)



GLS

**AB  
SHOWN**

Smithy's Lamp in solid copper with brass detail. Heavy riveted construction inspired by Victorian coal mining equipment. The Smithy's lamp is complemented by our Freighter range of lights. This light works beautifully over a kitchen island or countertop. We have also supplied this light as a heat lamp with high temperature cable and lamp holders to be used over a server counter.

Included 500mm chain and ceiling rose supplied - extra chain length available.

**Wattage:** 2 x 100w ES  
**Height:** 460mm / 18.1"  
**Width:** 560mm / 22"  
**Depth:** 280mm / 11"





## Gothic Wall Lights With Storm Glass (719G)



Finishes  
Available for  
this Collection



ANT



AB



PBUL



PB

ANT  
SHOWN

**Wattage:** 1 x 60w SES  
**Height:** 350mm / 13.8"  
**Width:** 115mm / 4.5"  
**Depth:** 285mm / 11.2"

Gothic Wall Sconce made using cast brass, casted from an original chandelier found in a Gothic church in County Cork in Ireland (C1800). This collection has been used in a number of historic buildings across world including ones owned by the Vatican along with private residences. These unique wall lights work very well in shabby chic style interior or in a more formal setting of a older period home. Supplied Complete with Clear Storm Glass.

Finishes  
Available for  
this Collection



ANT



AB



PBUL



PB



## Gothic Five Arm Chandelier With Storm Glasses (719P5G)



CANDLE

**AB  
SHOWN**

Gothic Five Arm Chandelier in cast brass, cast from an original chandelier found in a Gothic church in County Cork in Ireland (C1800). This collection has been used in a number of historic buildings across world including ones owned by the Vatican along with private residences, this Gothic chandelier is perfect where a statement centre light is required. Also available is a 2 tier 8 light version and matching wall lights and table lamp models. Supplied complete with Clear Storm Glasses.

Includes 500mm of chain and ceiling hook supplied complete - extra chain and flex available.

**Wattage:** 5 x 60w SES  
**Height:** 550mm / 21.6"  
**Width:** 740mm / 29.1"  
**Depth:** 740mm / 29.1"



## Gothic Eight Arm Chandelier With Storm Glasses (719P3P5G)



Finishes  
Available for  
this Collection



ANT



AB



PBUL



PB

**ANT  
SHOWN**

**Wattage:** 8 x 60w SES  
**Height:** 920mm / 36.2"  
**Width:** 740mm / 29.1"  
**Depth:** 740mm / 29.1"

Gothic Eight Arm Chandelier cast brass, casted from an original chandelier found in a Gothic church in County Cork in Ireland (C1800). This collection has been used in a number of historic buildings across world including ones owned by the Vatican along with private residences, this Gothic chandelier is perfect where a statement centre light is required. Also available as a single tier five arm version, matching wall light and table lamps. Supplied complete with Clear Storm Glasses.

Includes 500mm of chain and ceiling hook supplied complete - extra chain and flex available.

Finishes  
Available for  
this Collection



ANT



AB



PBUL



PB



## Gothic Wall Light (Small) (732)



CANDLE

ANT  
SHOWN

Gothic Wall Light (Small) C1700 cast brass with bevelled glass. This is a replica of an original Gothic lantern found in a church in Ireland. This gorgeous collection is handmade in solid brass and finished to your requirements.

**Wattage:** 1 x 40w SES  
**Height:** 280mm / 11"  
**Width:** 170mm / 6.7"  
**Depth:** 80mm / 3.1"



## Gothic Wall Light (Large) (732A)



Finishes  
Available for  
this Collection



ANT



AB



PBUL



PB

**AB  
SHOWN**

**Wattage:** 2 x 60w SES  
**Height:** 610mm / 4"  
**Width:** 260mm / 10.2"  
**Depth:** 150mm / 5.9"

Gothic Wall Light (Large) C1700 in cast brass with bevelled glass. The Gothic collection is based upon an original design found in a church in Ireland. This gorgeous collection is handmade in solid brass and finish to your requirements.

Finishes  
Available for  
this Collection



ANT



AB



PBUL



PB



## Gothic Hanging Lantern (Small) (733)



**AB  
SHOWN**

Gothic Hanging Lantern (Small) C.1700 handmade in cast brass with bevelled glass. The Gothic collection is based upon an original designs found in a gothic church in Cork, Ireland. This gorgeous collection is handmade in solid brass and finished to your requirements.

Included 500mm chain and ceiling rose supplied - extra chain length available.

**Wattage:** 1 x 60w ES  
**Height:** 400mm / 15.7"  
**Width:** 160mm / 6.3"  
**Depth:** 160mm / 6.3"



## Gothic Hanging Lantern (Large) (733A)



Finishes  
Available for  
this Collection



ANT



AB



PBUL



PB

**ANT  
SHOWN**

**Wattage:** 3 x 40w SES  
**Height:** 770mm / 30.3"  
**Width:** 250mm / 9.8"  
**Depth:** 250mm / 9.8"

Gothic Hanging Lantern (Large) C1700 handmade in cast brass with bevelled glass. The Gothic collection is based upon an original designs found in a gothic church in Cork, Ireland. This gorgeous collection is handmade in solid brass and finished to your requirements. The Large Gothic looks fantastic in a hallway with high ceilings or over a kitchen Island.

Included 500mm chain and ceiling rose supplied - extra chain length available.

Finishes  
Available for  
this Collection



ANT



AB



PBUL



PB

Recommended  
shades



EM30SIPL  
Natural



EM30SIPL  
Blue



EM30SIPL  
Coral



## Gothic Table Lamp (Medium) (748)



**AB  
SHOWN**

Gothic Table Lamp (Medium) hand made in cast brass. The Gothic collection is based upon original designs found in a gothic church in Cork, Ireland. This gorgeous collection is handmade in solid brass and finished to your requirements. Available with a choice of soft shades to suit your taste. The Gothic collection also has matching chandelier's and wall lights for a complete scheme. They are supplied with period braided silk flex and line switch.

**Wattage:** 1 x 60w ES

**WITHOUT SHADE**

**Height:** 570mm / 22.5"

**Width:** 140mm / 5.5"

**Depth:** 140mm / 5.5"

**WITH SHADE**

**Height:** 670mm / 26.4"

**Width:** 300mm / 11.8"

**Depth:** 300mm / 11.8"





## Gothic Table Lamp (Large) (749)



**PB  
SHOWN**

Wattage: 1 x 60w ES

**WITHOUT SHADE**

Height: 645mm / 25.4"

Width: 140mm / 5.5"

Depth: 140mm / 5.5"

**WITH SHADE**

Height: 745mm / 29.35"

Width: 300mm / 11.8"

Depth: 300mm / 11.8"

Gothic Table Lamp (Large) made of cast brass. handmade in cast brass. The Gothic collection is based upon original designs found in a gothic church in Cork, Ireland. This gorgeous collection is handmade in solid brass and finished to your requirements. Available with a choice of soft shades to suit your taste. The Gothic collection also has matching chandelier's and wall lights for a complete scheme. They are supplied with period braided silk flex and line switch.

Finishes  
Available for  
this Collection



ANT



AB



PBUL



PB

Recommended  
shades



EM40SIPL  
Natural



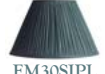
EM40SIPL  
Blue



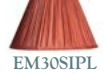
EM40SIPL  
Coral



EM30SIPL  
Natural



EM30SIPL  
Blue



EM30SIPL  
Coral

Finishes  
Available for  
this Collection



ANT



AB



PBUL



PB



## Gothic Table Lamp With Storm Glass (Small) (750)



ANT  
SHOWN

Gothic table lamp (Small) cast brass Table Lamp with Storm glass, supplied Complete with G027 (Clear Storm Glass Shade). handmade in cast brass. The Gothic collection is based upon original designs found in a gothic church in Cork, Ireland. This gorgeous collection is handmade in solid brass and finished to your requirements. Also available are matching chandeliers and wall lights for a more comprehensive lighting scheme. They are supplied with period braided silk flex and line switch.

**Wattage:** 1 x 60w SES  
**Height:** 370mm / 14.6"  
**Width:** 150mm / 5.9"  
**Depth:** 150mm / 5.9"



## Gothic Table Lamp With Storm Glass (Medium) (751)



Finishes  
Available for  
this Collection



ANT



AB



PBUL



PB

**AB  
SHOWN**

**Wattage:** 1 x 60w SES  
**Height:** 600mm / 23.6"  
**Width:** 150mm / 5.9"  
**Depth:** 150mm / 5.9"

Medium Gothic table lamp (Medium) cast brass table lamp, supplied Complete with G027 (Clear Storm Glass Shade). Handmade in cast brass, the Gothic collection is based upon original designs found in a gothic church in Cork, Ireland. This gorgeous collection is handmade in solid brass and finished to your requirements. Also available in the collection are matching chandeliers and wall lights. They are supplied with period braided silk flex and line switch.

Finishes  
Available for  
this Collection



ANT



AB



PBUL



PB



## Gothic Table Lamp With Storm Glass (Large) (752)



**PB  
SHOWN**

Gothic Table Lamp (Large) handmade in cast brass, the Gothic collection is based upon an original designs found in a gothic church in Cork, Ireland. This gorgeous collection is handmade in solid brass and finished to your requirements. Supplied Complete with G027 (Clear Storm Glass Shade). The Gothic table lamp is available in 3 sizes. Also available are table lamps to take soft shades, matching chandeliers and wall lights. They are supplied with period braided silk flex and line switch.

**Wattage:** 1 x 60w SES  
**Height:** 690mm / 27.1"  
**Width:** 150mm / 5.9"  
**Depth:** 150mm / 5.9"



## Broughton Pendant (650)



Finishes  
Available for  
this Collection



N



ANT



AB



PBUL



PB

ANT  
SHOWN

**Wattage:** 4 x 40w SES  
**Height:** 750mm / 29.5"  
**Width:** 540mm / 21.3"  
**Depth:** 540mm / 21.3"

Broughton Pendant handmade of solid brass. The Broughton Pendant is a stunning Regency hanging light fixture that can be ordered to suit requirements. A simple and elegant pendant light, the Broughton Pendant makes an ideal period centrepiece.

Included: 500mm chain and ceiling rose supplied – extra chain length available.

Finishes  
Available for  
this Collection



ANT



AB



PBUL



PB

Optional  
available  
shades



C6 Black



C6 Ivory



C6 Red



## Cottage Wall Light (707)



**PB  
SHOWN**

Cottage Wall Light, handmade in solid brass with cast brass filigree's. (NOTE: C6 shades available separately). The Cottage collection is our range made for older properties with lower ceilings and for those wanting a touch of period charm. This range is best suited for a Tudor Cottage or 17th century or older property, also available as a Twin Wall Light and a three light pendant.

**Wattage:** 1 x 40w SES  
**Height:** 295mm / 11.6"  
**Width:** 150mm / 5.9"  
**Depth:** 310mm / 12.2"



## Cottage Twin Wall Light (707T)



**AB  
SHOWN**

**Wattage:** 2 x 40w SES  
**Height:** 295mm / 11.6"  
**Width:** 311mm / 12.2"  
**Depth:** 150mm / 5.9"

Cottage Twin Wall Light made of solid brass with cast brass filigree's. (NOTE: C6 shades available separately). The Cottage collection is our range made for older properties with lower ceilings and for those wanting a touch of period charm. This range is best suited for a Tudor Cottage or 17th century or older property, also available as a Single Wall Light and a three light pendant.

Finishes  
Available for  
this Collection



ANT



AB



PBUL



PB

Optional  
available  
shades



C6 Black



C6 Ivory



C6 Red



Finishes  
Available for  
this Collection



ANT



AB



PBUL



PB

Optional  
available  
shades



C6 Black



C6 Ivory



C6 Red



## Cottage Three Light Pendant (707P3)



CANDLE

**PBUL  
SHOWN**

Cottage three light Pendant is handmade in solid brass with cast brass filigree's (NOTE: C6 Shades available separately). The Cottage hanging three light pendant is a lovely traditional English hanging light. The Cottage collection is our range made for older properties with lower ceilings and for those wanting a touch of period charm. This range is best suited for a Tudor Cottage or 17th century or older property, also available as a Single or Twin Wall Light.

Includes: 500mm of chain and ceiling plate supplied complete extra chain and cable can be added.

**Wattage:** 3 x 40w SES  
**Height:** 480mm / 18.9"  
**Width:** 450mm / 17.7"  
**Depth:** 450mm / 17.7"



## Empire Wall Light (730)



**AB  
SHOWN**

**Wattage:** 1 x 40w SES  
**Height:** 220mm / 8.7"  
**Width:** 120mm / 4.7"  
**Depth:** 320mm / 12.6"

Empire Wall Light C1760 in cast brass. The Empire collection is cast from an original cast wall sconce found in a Norfolk Stately home, available with optional shades. This heavy brass collection is typical of the Georgian Elegance found throughout aristocratic estate homes of this period. Typically British in style, the Empire range works beautifully amidst original antique furnishings.

Finishes  
Available for  
this Collection



ANT



AB



PBUL



PB

Optional  
available  
shades



D6(G) Gold



D6(G) Ivory



D6(G) Black



D6 White



D6 Black



D6 Ivory

Finishes  
Available for  
this Collection



ANT



AB



PBUL



PB

Optional  
available  
shades



D6(G) Gold



D6(G) Ivory



D6(G) Black



D6 White



D6 Black



D6 Ivory



## Empire 6 Arm Chandelier (730P6)



CANDLE

**PBUL  
SHOWN**

Empire 6 Arm Chandelier Circa 1760 cast brass colonial chandelier. This replica of an original piece found in a Norfolk stately home. Using castings from the original chandelier and hand finished, we have recreated this stunning heavy cast centrepiece. The Empire makes a grand statement in a large drawing room or over a grand dining table. Also available with storm glasses and matching wall sconces.

Includes: 500mm of chain and ceiling hook supplied complete - extra chain and flex available.

**Wattage:** 6 x 40w SES  
**Height:** 730mm / 28.7"  
**Width:** 820mm / 32.3"  
**Depth:** 820mm / 32.3"



## Empire Wall Light With Storm Glass (730G)



Finishes  
Available for  
this Collection



ANT



AB



PBUL



PB

**PBUL  
SHOWN**

**Wattage:** 1 x 60w SES  
**Height:** 310mm / 12.2"  
**Width:** 120mm / 4.7"  
**Depth:** 320mm / 12.6"

Empire Wall Light with storm glass C1760 cast brass. The Empire collection is based upon an original cast wall sconce found in a Norfolk stately home. The Empire Wall Light is an opulent wall sconce, recreated from an original Georgian piece. This stunning period wall light is made from solid cast brass from the original parts. The collection also features matching chandeliers and versions to take soft shades.

Finishes  
Available for  
this Collection



ANT



AB



PBUL



PB



## Empire 6 Arm Chandelier With Storm Glasses (730P6G)



CANDLE

ANT  
SHOWN

Empire 6 Arm Chandelier with storm glasses Circa 1760. This Colonial Chandelier made in cast brass. Created as replica of an original found in a Norfolk Stately home, The Empire Chandelier is an opulent 6 arm heavy cast brass light recreated from an original Georgian Piece. This elegant period chandelier looks stunning in a period dining room where a grand centre statement is required.

Includes: 500mm of chain and ceiling hook supplied complete - extra chain and flex available.

**Wattage:** 6 x 60w SES  
**Height:** 730mm / 28.7"  
**Width:** 820mm / 32.3"  
**Depth:** 820mm / 32.3"



## Carlton Single Wall Sconce (710)



**ANT  
SHOWN**

**Wattage:** 1 x 40w SES  
**Height:** 290mm / 11.4"  
with Shade  
**Width:** 80mm / 3.1"  
**Depth:** 190mm / 7.5"  
with Shade

Carlton Single Wall Sconce in cast brass. The Carlton wall light is a simple but elegant period wall light that is relatively small in proportions, producing pure period charm. This stunning wall sconce is perfect for either side of a mirror or painting and is also available as a Twin Wall Sconce.

Note: D6/D6G (Gold interior) shades available separately

Finishes  
Available for  
this Collection



ANT



AB



PBUL



PB

Optional  
available  
shades



D6(G) Gold



D6(G) Ivory



D6(G) Black



D6 White



D6 Black



D6 Ivory

Finishes  
Available for  
this Collection



ANT



AB



PBUL



PB

Optional  
available  
shades



D6(G) Gold



D6(G) Ivory



D6(G) Black



D6 White



D6 Black



D6 Ivory



## Carlton Twin Wall Sconce (710T)



CANDLE

**AB  
SHOWN**

Carlton Twin Wall Sconce made of cast brass. The Carlton wall light is a simple but elegant period wall light that is relatively small in proportions, producing pure period charm. This stunning wall sconce is perfect for creating an intimate scene and is also available as a Single Wall Sconce.

Note: D6/D6G (Gold interior) shades available separately.

**Wattage:** 2 x 40w SES  
**Height:** 290mm / 11.4"  
with Shade  
**Width:** 270mm / 10.6"  
**Depth:** 170mm / 6.7"  
with Shade





## The India Rose Wall Sconce (Single) (713)



HEIGHT  
WITH BULB

**AB  
SHOWN**

**Wattage:** 1 x 40w SES  
**Height:** 250mm / 9.8"  
**Width:** 140mm / 5.5"  
**Depth:** 190mm / 7.5"

Made of solid machined and cast brass, The India Rose sconces feature a petal shaped back plate and matching detail below the candle tube. This transitional design suits both contemporary and traditional lighting schemes. Available with optional D6 and D6G shades

Finishes  
Available for  
this Collection



N



ANT



AB



PBUL



PB

Optional  
available  
shades



D6(G) Gold



D6(G) Ivory



D6(G) Black



D6 White



D6 Black



D6 Ivory

Finishes  
Available for  
this Collection



N



ANT



AB



PBUL



PB

Optional  
available  
shades



D6(G) Gold



D6(G) Ivory



D6(G) Black



D6 White



D6 Black



D6 Ivory



## The India Rose Wall Sconce (Twin) (713T)



CANDLE



HEIGHT  
WITH SHADE

**D6 WHITE  
SHOWN**

**N  
SHOWN**

Made of solid machined and cast brass, The India Rose sconces feature a petal shaped back plate and matching detail below the candle tube. This transitional design suits both contemporary and traditional lighting schemes. Available with optional D6 and D6G shades.

**Wattage:** 2x 40w SES  
**Height:** 250mm / 9.8"  
**Width:** 260mm / 10.25"  
**Depth:** 175mm / 6.9"



## The Suzanna Wall Sconce (Single) (711)



CANDLE



OPTIONAL  
PUSH SWITCH  
AVAILABLE



IP44  
OPTIONAL



HEIGHT  
WITH BULB

**AB  
SHOWN**

**Wattage:** 1 x 40w SES  
**Height:** 250mm / 9.9"  
**Width:** 120mm / 4.75"  
**Depth:** 175mm / 6.9"



Made of solid cast and machined brass. The Suzanna collection follows a simple clean design that suits both contemporary and traditional interior schemes. Available with optional D6 and D6G shades. An optional push switch can be specified for individual switching.

Finishes  
Available for  
this Collection



N



ANT



AB



PBUL



PB

Optional  
available  
shades



D6(G) Gold



D6(G) Ivory



D6(G) Black



D6 White



D6 Black



D6 Ivory

Finishes  
Available for  
this Collection



N



ANT



AB



PBUL



PB

Optional  
available  
shades



D6(G) Gold



D6(G) Ivory



D6(G) Black



D6 White



D6 Black



D6 Ivory



## The Suzanna Wall Sconce (Twin) (711T)



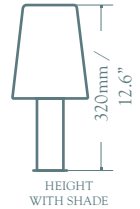
CANDLE



OPTIONAL  
PUSH SWITCH  
AVAILABLE



IP44  
OPTIONAL



HEIGHT  
WITH SHADE

**D6 BLACK  
SHOWN**

**N  
SHOWN**

Made of solid cast and machined brass. The Suzanna collection follows a simple clean design that suits both contemporary and traditional interior schemes. Available with optional D6 and D6G shades. An optional push switch can be specified for individual switching.

**Wattage:** 2 x 40w SES  
**Height:** 250mm / 9.9"  
**Width:** 250mm / 9.9"  
**Depth:** 190mm / 7.5"



## The Suzanna Tall Wall Sconce (Single) (712)



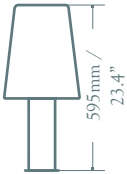
CANDLE



OPTIONAL  
PUSH SWITCH  
AVAILABLE



OPTIONAL



HEIGHT  
WITH SHADE  
595mm / 23.4"

**PBUL  
SHOWN**

**D6 BLACK  
SHOWN**

**Wattage:** 1 x 40w SES  
**Height:** 500mm / 19.7"  
**Width:** 120mm / 4.75"  
**Depth:** 175mm / 6.9"



Made of solid cast and machined brass. The Suzanna collection follows a simple clean design that suits both contemporary and traditional interior schemes. Available with optional D6 and D6G shades. An optional push switch can be specified for individual switching.

Finishes  
Available for  
this Collection



N



ANT



AB



PBUL



PB

Optional  
available  
shades



D6(G) Gold



D6(G) Ivory



D6(G) Black



D6 White



D6 Black



D6 Ivory

Finishes  
Available for  
this Collection



N



ANT



AB



PBUL



PB

Optional  
available  
shades



D6(G) Gold



D6(G) Ivory



D6(G) Black



D6 White



D6 Black



D6 Ivory



## The Suzanna Tall Wall Sconce (Twin) (712T)



CANDLE



OPTIONAL  
PUSH SWITCH  
AVAILABLE



IP44  
OPTIONAL



HEIGHT  
WITH BULB

**PB  
SHOWN**

Made of solid cast and machined brass. The Suzanna collection follows a simple clean design that suits both contemporary and traditional interior schemes. Available with optional D6 and D6G shades. An optional push switch can be specified for individual switching.

**Wattage:** 2 x 40w SES  
**Height:** 500mm / 19.7"  
**Width:** 245mm / 9.7"  
**Depth:** 175mm / 6.9"



## The Christina Wall Sconce (Single) (711D)



HEIGHT  
WITH BULB

**N  
SHOWN**

**Wattage:** 1 x 40w SES  
**Height:** 265mm / 10.4"  
**Width:** 120mm / 4.75"  
**Depth:** 185mm / 7.3"



Made of solid cast and machined brass. The Christina collection features a diamond shaped back plate with scalloped edge and a chunky sconce detail creating a feature aesthetic. This clean design suits both contemporary and traditional interior schemes. Available with optional D6 and D6G shades. An optional push switch can be specified for individual switching.

Finishes  
Available for  
this Collection



N



ANT



AB



PBUL



PB

Optional  
available  
shades



D6(G) Gold



D6(G) Ivory



D6(G) Black



D6 White



D6 Black



D6 Ivory



Finishes  
Available for  
this Collection



N



ANT



AB



PBUL



PB

Optional  
available  
shades



D6(G) Gold



D6(G) Ivory



D6(G) Black



D6 White



D6 Black



D6 Ivory



## The Christina Wall Sconce (Twin) (711DT)



CANDLE



HEIGHT  
WITH BULB

**D6G GOLD  
SHOWN**

**PB  
SHOWN**

Made of solid cast and machined brass. The Christina collection features a diamond shaped back plate with scalloped edge and a chunky sconce detail creating a feature aesthetic. This clean design suits both contemporary and traditional interior schemes. Available with optional D6 and D6G shades. An optional push switch can be specified for individual switching.

**Wattage:** 2 x 40w SES  
**Height:** 265mm / 10.4"  
**Width:** 245mm / 9.7"  
**Depth:** 185mm / 7.3"



## The Christina Tall Wall Sconce (Single) (712D)



**AB  
SHOWN**

**Wattage:** 1 x 40w SES  
**Height:** 500mm / 19.7"  
**Width:** 120mm / 4.75"  
**Depth:** 185mm / 7.3"



Made of solid cast and machined brass. The Christina collection features a diamond shaped back plate with scalloped edge and a chunky sconce detail creating a feature aesthetic. This clean design suits both contemporary and traditional interior schemes. Available with optional D6 and D6G shades. An optional push switch can be specified for individual switching.

Finishes Available for this Collection



N



ANT



AB



PBUL



PB

Optional available shades



D6(G) Gold



D6(G) Ivory



D6(G) Black



D6 White



D6 Black



D6 Ivory

Finishes  
Available for  
this Collection



N



ANT



AB



PBUL



PB

Optional  
available  
shades



D6(G) Gold



D6(G) Ivory



D6(G) Black



D6 White



D6 Black



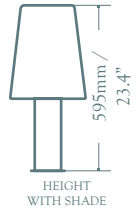
D6 Ivory



## The Christina Tall Wall Sconce (Twin) (712DT)



CANDLE



HEIGHT  
WITH SHADE

ANT  
SHOWN

D6G IVORY  
SHOWN

Made of solid cast and machined brass. The Christina collection features a diamond shaped back plate with scalloped edge and a chunky sconce detail creating a feature aesthetic. This clean design suits both contemporary and traditional interior schemes. Available with optional D6 and D6G shades. An optional push switch can be specified for individual switching.

**Wattage:** 1 x 40w SES  
**Height:** 500mm / 19.7"  
**Width:** 245mm / 9.7"  
**Depth:** 185mm / 7.3"



## Grosvenor Wall Light (721)



**N  
SHOWN**

**Wattage:** 1 x 40w SES  
**Height:** 420mm / 16.5"  
**Width:** 80mm / 3.1"  
**Depth:** 190mm / 7.5"

Grosvenor Single Wall sconce in cast brass. The Grosvenor Single wall light is an elegant cast brass wall sconce, this timeless piece looks stunning in both traditional and contemporary homes. With a long shallow profile they are truly versatile and work beautifully either side of a mirror or lighting a hallway. The Grosvenor collection are available in both single and twin sconces, with optional shades and storm glasses including a bathroom version which is IP44 rated.

Finishes  
Available for  
this Collection



N



ANT



AB



PBUL



PB

Optional  
available  
shades



D6(G) Gold



D6(G) Ivory



D6(G) Black



D6 White



D6 Black



D6 Ivory

Finishes  
Available for  
this Collection



N



ANT



AB



PBUL



PB

Optional  
available  
shades



D6(G) Gold



D6(G) Ivory



D6(G) Black



D6 White



D6 Black



D6 Ivory



## Grosvenor Twin Wall Sconce (721T)



CANDLE

**AB  
SHOWN**

Grosvenor Twin Wall Sconce made of cast brass. The Grosvenor Twin wall light is an elegant wall sconce, this timeless piece looks stunning in both traditional and contemporary homes. With a long shallow profile they are truly versatile and work beautifully either side of a mirror or lighting a hallway. The Grosvenor collection are available in both single and twin sconces, with optional shades and storm glasses including a bathroom version which is IP44 rated.

**Wattage:** 2 x 40w SES  
**Height:** 420mm / 16.5"  
**Width:** 280mm / 11"  
**Depth:** 145mm / 5.7"



## Grosvenor Bathroom Wall Light (721B)



**AB  
SHOWN**

**Wattage:** 1 x 25w G9  
**Height:** 420mm / 16.5"  
**Width:** 110mm / 4.3"  
**Depth:** 190mm / 7.5"

Grosvenor Bathroom Wall light (IP44 Bathroom version) made of solid brass. The Grosvenor bathroom versions incorporate a larger back plate and sealed IP44 bulb that allows for installation in zone 2 of bathrooms and cloakrooms.

The Grosvenor Bathroom wall light is an elegant cast brass wall sconce, this timeless piece looks stunning in both traditional and contemporary homes, With a long shallow profile they are truly versatile and work beautifully either side of a mirror. The Grosvenor collection are also available in both single and twin sconces, with optional shades and storm glasses (rated IP23).

Finishes Available for this Collection



N



ANT



AB



PBUL



PB

Optional available shades



D6(G) Gold



D6(G) Ivory



D6(G) Black



D6 White



D6 Black



D6 Ivory

Finishes  
Available for  
this Collection



N



ANT



AB



PBUL



PB

Optional  
available  
shades



D6(G) Gold



D6(G) Ivory



D6(G) Black



D6 White



D6 Black



D6 Ivory



## Grosvenor Twin Bathroom Wall Light (721BT)



G9

**N  
SHOWN**

Grosvenor Twin Wall Light (IP44 Bathroom version) made of solid brass. The Grosvenor bathroom versions incorporate a larger back plate and sealed IP44 bulb that allows for installation in zone 2 of bathrooms and cloakrooms.

The Grosvenor Twin Bathroom wall light is an elegant cast brass wall sconce, this timeless piece looks stunning in both traditional and contemporary homes, With a long shallow profile they are truly versatile and work beautifully either side of a mirror. The Grosvenor collection are also available in both single and twin sconces, with optional shades and storm glasses rated (IP23)

**Wattage:** 2 x 25w G9  
**Height:** 420mm / 16.5"  
**Width:** 280mm / 11"  
**Depth:** 145mm / 5.7"





## Grosvenor Wall Sconce With Storm Glass (721G)



Finishes  
Available for  
this Collection



N



ANT



AB



PBUL



PB

**AB  
SHOWN**

**Wattage:** 1 x 60w SES  
**Height:** 550mm / 21.7"  
**Width:** 120mm / 4.7"  
**Depth:** 190mm / 7.5"

Grosvenor Single Wall Sconce with storm glass made of solid cast brass. The Grosvenor single wall light is an elegant cast brass wall sconce, this timeless piece looks stunning in both traditional and contemporary homes. With a long shallow profile they are truly versatile and work beautifully either side of a mirror or lighting a hallway. The Grosvenor collection are available in both single and twin sconces, with optional shades and storm glasses including a bathroom version which is IP44 rated.

Finishes  
Available for  
this Collection



N



ANT



AB



PBUL



PB



## Grosvenor Twin Wall Sconce With Storm Glass (721TG)



CANDLE

N  
SHOWN

Grosvenor Twin Wall Sconce with storm glass made of solid cast brass. The Grosvenor Twin wall light is an elegant wall sconce, this timeless piece looks stunning in both traditional and contemporary homes. With a long shallow profile they are truly versatile and work beautifully either side of a mirror or lighting a hallway.

**Wattage:** 2 x 60w SES  
**Height:** 550mm / 21.7"  
**Width:** 330mm / 13"  
**Depth:** 180mm / 7"

The Grosvenor collection are available in both single and twin sconces, with optional shades and storm glasses including a bathroom version which is IP44 rated.



## Grosvenor Bathroom Wall Sconce With Storm Glass (721BG)



Finishes Available for this Collection



N



ANT



AB



PBUL



PB

**PB  
SHOWN**

**Wattage:** 1 x 25w G9  
**Height:** 550mm / 21.7"  
**Width:** 120mm / 4.7"  
**Depth:** 190mm / 7.5"

Grosvenor Bathroom Wall Sconce (IP44) with storm glass made of solid cast brass. The Grosvenor bathroom versions incorporate a larger back plate and sealed IP44 bulb that allows for installation in zone 2 of bathrooms and cloakrooms.

The Grosvenor Bathroom wall light is an elegant wall sconce, this timeless piece looks stunning in both traditional and contemporary homes. With a long shallow profile they are truly versatile and work beautifully either side of a mirror. The Grosvenor collection are also available in both single and twin sconces, with optional shades and storm glasses rated (IP23)

Finishes  
Available for  
this Collection



N



ANT



AB



PBUL



PB



## Grosvenor Twin Bathroom Wall Sconce With Storm Glass (721BTG)



N  
SHOWN

Grosvenor Twin Bathroom Wall Light (IP44 Bathroom version) made of solid brass, supplied complete with storm glasses. The Grosvenor bathroom versions incorporate a larger back plate and sealed IP44 bulb that allows for installation in zone 2 of bathrooms and cloakrooms.

The Grosvenor Twin Bathroom wall light is an elegant wall sconce, this timeless piece looks stunning in both traditional and contemporary homes. With a long shallow profile they are truly versatile and work beautifully either side of a mirror. The Grosvenor collection are also available in both single and twin sconces, with optional shades and storm glasses rated (IP23)

**Wattage:** 2 x 25w G9  
**Height:** 550mm / 21.7"  
**Width:** 330mm / 13"  
**Depth:** 180mm / 7"



## Eton Wall Light (726)



**N  
SHOWN**

**Wattage:** 1 x 40w SES  
**Height:** 250mm / 9.8"  
**Width:** 110mm / 4.3"  
**Depth:** 130mm / 5.1"

Eton Wall Light in cast brass shown with (optional) spun brass shade (CB55). The Eton period wall light is a delightful simple design, that creates a feature light in areas within a small space. This timeless piece is made of cast brass, The Eton Wall Light is a truly unique piece.

Finishes Available for this Collection



N



ANT



AB



PBUL



PB

Optional available shades



CY6 Black



CY6 Ivory



CY6 White



CB55



CB55N

Finishes  
Available for  
this Collection



N



ANT



AB



PBUL



PB

Recommended  
shades



C7 Ivory



C7 White



C7 Black



## Velsheda Single Wall Sconce (723)



OPTIONAL



CANDLE

**PB  
SHOWN**

Velsheda Single Wall Sconce. Handmade in solid brass with machined solid brass detail. These beautifully made wall sconces are inspired by the 1930's J class racing yacht of the same name. Built by kings and industrialists, the J class yachts were a prelude to the America's Cup 12m class boats. The collar detail on these lights are created to mimic the gimbal mounts required on yachts. Supplied complete with a linen over card shade and hand finished to order, the Velsheda sconces are available in single and twin versions. The simple timeless design of the Velsheda sconces suit both contemporary and period interiors, adding an elegant nautical twist.

**Wattage:** 2 x 40w SES  
**Height:** 455mm / 19.5"  
**Width:** 385mm / 15"  
**Depth:** 250mm / 90.75"



## Velsheda Twin Wall Sconce (723T)



OPTIONAL



CANDLE



Finishes  
Available for  
this Collection



N



ANT



AB



PBUL



PB

Recommended  
shades



C7 Ivory



C7 White



C7 Black

**N  
SHOWN**

**Wattage:** 2 x 40w SES  
**Height:** 455mm / 19.5"  
**Width:** 385mm / 15"  
**Depth:** 250mm / 9.85"

Velsheda Twin Wall Sconce. Handmade in solid brass with machined solid brass detail. These beautifully made wall sconces are inspired by the 1930's J class racing yacht of the same name. Built by kings and industrialists, the J class yachts were a prelude to the America's Cup 12m class boats. The collar detail on these lights are created to mimic the gimbal mounts required on yachts. Supplied complete with a linen over card shade and hand finished to order, the Velsheda sconces are available in single and twin versions. The simple timeless design of the Velsheda sconces suit both contemporary and period interiors, adding an elegant nautical twist.

Finishes  
Available for  
this Collection



N



ANT



AB



PBUL



PB

Optional  
available  
shades



CY6 Black



CY6 Ivory



CY6 White



## E'toile Single Wall Light (820)



OPTIONAL



CANDLE

**N  
SHOWN**

E'toile Single Wall Light made of cast brass. IP20 internal use and bathroom IP44 also available. The E'toile (Star) wall light is a replica of a 1920's original, found in a Parisian apartment. This stunning wall light is available converted as bathroom wall light and looks gorgeous either side of a mirror.

**Wattage:** 1 x 40w SES  
**Height:** 330mm / 13"  
**Width:** 160mm / 6.3"  
**Depth:** 135mm / 5.3"





## E'toile Twin Wall Light (821)



Finishes  
Available for  
this Collection



N



ANT



AB



PBUL



PB

Optional  
available  
shades



CY6 Black



CY6 Ivory



CY6 White

**AB  
SHOWN**

**Wattage:** 2 x 40w SES  
**Height:** 330mm / 13"  
**Width:** 190mm / 7.5"  
**Depth:** 120mm / 4.7"

E'toile Twin Wall Light made of cast brass. IP20 internal use and standard IP44 Zone 2 Bathroom Use available. The E'toile (Star) wall light is a replica of a 1920's original found in a Parisian apartment. This stunning wall light is available converted as a bathroom wall light and looks gorgeous either side of a mirror.

Finishes  
Available for  
this Collection



N



ANT



AB



PBUL



PB

Optional  
available  
shades



CY6 Black



CY6 Ivory



CY6 White



## Opera Single Wall Sconce (822)



OPTIONAL



CANDLE

**N  
SHOWN**

Opera Single Wall Sconce C1780 made of cast brass replica Georgian wall sconce. IP44 (Bathroom Zone 2) available. The Opera is inspired by the original Georgian wall sconces found in the private boxes at London's Royal Opera House. Classic Baroque style wall lights. These cast brass sconces are ideal when creating a Georgian ambience, giving a lavish almost theatrical feel to an interior space, perfect for hallways and alcoves or flanking an opulent mirror.

**Wattage:** 1 x 40w SES  
**Height:** 270mm / 10.6"  
**Width:** 140mm / 5.5"  
**Depth:** 130mm / 5.1"



## Opera Twin Wall Sconce (823)



**AB  
SHOWN**

**Wattage:** 2 x 40w SES  
**Height:** 270mm / 10.6"  
**Width:** 210mm / 8.3"  
**Depth:** 100mm / 3.9"

Opera Twin Wall Sconce C1780 made of cast brass. The Opera is inspired by the original Georgian wall sconces found in the private boxes at London's Royal Opera House. These stunning wall lights are classic Baroque. These heavy cast wall sconces also available as a single version, work beautifully when creating a theatrical interior. They are ideally suited to hallways or snook areas. Often used either side of a fireplace to add feature where the curved back plate reflects light off every surface.

IP44 (Bathroom Zone 2) also available.

Finishes Available for this Collection



N



ANT



AB



PBUL



PB

Optional available shades



CY6 Black



CY6 Ivory



CY6 White

Finishes  
Available for  
this Collection



N



ANT



AB



PBUL



PB

Optional  
available  
shades



CY6 Black



CY6 Ivory



CY6 White



## Georgian Single Wall Sconce (824)



OPTIONAL



CANDLE

**PB  
SHOWN**

Georgian Single Wall Sconce made of solid cast brass. This cast brass wall light, is a simple but elegant Georgian wall sconce, typical of candle sconces of this era. The polished nickel finish in this collection recreates the luxury of silver dipped candle sconces of this period.

IP44 (Bathroom Zone 2) also available.

**Wattage:** 1 x 40w SES  
**Height:** 360mm / 14.2"  
**Width:** 100mm / 3.9"  
**Depth:** 140mm / 5.5"



## Georgian Twin Wall Sconce (825)



**N  
SHOWN**

**Wattage:** 2 x 40w SES  
**Height:** 360mm / 14.2"  
**Width:** 210mm / 8.3"  
**Depth:** 110mm / 4.3"

Georgian Twin Wall Sconce sand cast in solid brass . This cast brass wall light is a truly elegant Georgian wall sconce with a heavy cast brass quilted detail back plate. Opulent yet simple, this collection typifies classic Georgian style. Perfect for use in hallways or as side light to a period mirror or painting.

IP44 (Bathroom Zone 2) also available

Finishes  
Available for  
this Collection



N



ANT



AB



PBUL



PB

Optional  
available  
shades



CY6 Black



CY6 Ivory



CY6 White

Finishes  
Available for  
this Collection



N



ANT



AB



PBUL



PB

Optional  
available  
shades



CY6 Black



CY6 Ivory



CY6 White



## Diane Single Wall Sconce (826)



OPTIONAL



CANDLE

**AB  
SHOWN**

Diane Single Wall Sconce C1780 made of cast brass. The Diane is a classic Georgian wall light featuring a cast brass bevelled edge back plate. Simple but elegant for the refined period interior, the originals of this collection were from a Nash Terrace mansion property in Regents Park.

IP44 (Bathroom Zone 2) also available.

**Wattage:** 1 x 40w SES  
**Height:** 250mm / 9.8"  
**Width:** 115mm / 4.5"  
**Depth:** 155mm / 6.1"



## Diane Twin Wall Sconce (827)



**PB  
SHOWN**

**Wattage:** 2 x 40w SES  
**Height:** 250mm / 9.8"  
**Width:** 215mm / 8.5"  
**Depth:** 110mm / 4.3"

Diane Twin Sconce C1780 made of sand cast solid brass . The Diane is classic Georgian wall light, featuring a cast brass bevelled edge back plate. Simple but elegant for the refined period interior, the original was from a Nash Terrace mansion property in Regents Park. Also available in an IP44 (Bathroom Zone 2) version for use in cloakrooms or either side of a vanity mirror over a sink.

Finishes  
Available for  
this Collection



N



ANT



AB



PBUL



PB

Optional  
available  
shades



CY6 Black



CY6 Ivory



CY6 White

Finishes  
Available for  
this Collection



N



ANT



AB



PBUL



PB

Optional  
available  
shades



CY6 Black



CY6 Ivory



CY6 White



## Valerie Single Wall Sconce (828)



OPTIONAL



CANDLE

**PBUL  
SHOWN**

Valerie Single Bathroom Wall Sconce C1780 made of cast brass. This replica Georgian wall sconce is based upon originals from Pall Mall's Reform Club. The Valerie collection offers the refined style that typifies The Reform Club's gentrified environment. A classic period wall sconce with its tall narrow profile is perfect for hall ways or either side of a mirror. The Valerie is also available in bathroom rated versions.

**Wattage:** 1 x 40w SES  
**Height:** 350mm / 13.8"  
**Width:** 115mm / 4.5"  
**Depth:** 155mm / 6.1"





## Valerie Twin Wall Sconce (829)



OPTIONAL



CANDLE



Finishes Available for this Collection



N



ANT



AB



PBUL



PB

Optional available shades



CY6 Black



CY6 Ivory



CY6 White

**AB  
SHOWN**

**Wattage:** 2 x 40w SES  
**Height:** 350mm / 13.8"  
**Width:** 205mm / 8"  
**Depth:** 140mm / 5.5"

Valerie Twin Wall Sconce C1780 made of cast brass. This replica Georgian wall sconce is based upon originals from Pall Mall's Reform Club. The Valerie collection offers the refined style that typifies The Reform Club's gentrified environment. The Valerie is classic period wall sconce with its tall narrow profile if is perfect for hall ways or either side of a mirror. The Valerie is also available in bathroom rated versions.

Finishes  
Available for  
this Collection



ANT



AB



PBUL



PB

Optional  
available  
shades



CY6 Black



CY6 Ivory



CY6 White



## Hampton Single Wall Sconce (830)



CANDLE

**PBUL  
SHOWN**

Hampton Single Wall Sconce cast brass shown. The Hampton wall sconce is a classic New England style wall light. Simple but elegant proportions make it ideal for a relaxed American Colonial style house.

**Wattage:** 1 x 40w SES  
**Height:** 470mm / 18.5"  
**Width:** 100mm / 3.9"  
**Depth:** 145mm / 5.7"



## Hampton Twin Wall Sconce (831)



Finishes  
Available for  
this Collection



ANT



AB



PBUL



PB

Optional  
available  
shades



CY6 Black



CY6 Ivory



CY6 White

**ANT  
SHOWN**

**Wattage:** 2 x 40w SES  
**Height:** 470mm / 18.5"  
**Width:** 250mm / 9.8"  
**Depth:** 115mm / 4.5"

Hampton Twin Wall Sconce made of cast brass. The Hampton wall sconce is a classic, New England Style wall light. Simple but elegant proportions make it ideal for a relaxed beach house or a more formal eclectic interior.

Finishes  
Available for  
this Collection



N



ANT



AB



PBUL



PB

Recommended  
shades



EM30SIPL  
Natural



EM30SIPL  
Blue



EM30SIPL  
Coral



## Provençal Candlestick Lamp (Short) (801)



**PB  
SHOWN**

The Provençal table lamps are based upon a simple 19th Century French candle stick design. made of solid brass these narrow lamps are designed for use on console tables or smaller side tables to create feature lighting. Perfect either side of a mirror or painting. These classic table lamps, available in all our finishes with shades to suit your taste, complement almost any period interior. Available in two heights supplied with braided silk flex and line switch.

**Wattage:** 1 x 60w ES

**WITHOUT SHADE**

**Height:** 630mm / 24.75"

**Width:** 130mm / 5.2"

**Depth:** 130mm / 5.2"

**WITH SHADE**

**Height:** 740mm / 29.2"

**Width:** 300mm / 11.8"

**Depth:** 300mm / 11.8"



## Provencal Candlestick Lamp (Tall) (801A)



**AB  
SHOWN**

Wattage: 1 x 60w ES

**WITHOUT SHADE**

Height: 730mm / 28.75"

Width: 130mm / 5.2"

Depth: 130mm / 5.2"

**WITH SHADE**

Height: 840mm / 33.2"

Width: 300mm / 11.8"

Depth: 300mm / 11.8"

The Provencal table lamps are based upon a simple 19th Century French candle stick design. made of solid brass these narrow lamps are designed for use on console tables or smaller side tables to create feature lighting. Perfect either side of a mirror or painting. These classic table lamps, available in all our finishes with shades to suit your taste, complement almost any period interior. Available in two heights supplied with period braided silk flex and line switch.

Finishes  
Available for  
this Collection



N



ANT



AB



PBUL



PB

Recommended  
shades



EM30SIPL  
Natural



EM30SIPL  
Blue



EM30SIPL  
Coral

Finishes  
Available for  
this Collection



N



ANT



AB



PBUL



PB

Recommended  
shades



C7 Ivory



C7 White



C7 Black



EM20P Blue



EM20P Coral



EM20P Linen



EM20P Taupe



## Provençal Wall Light (802)



CANDLE



OPTIONAL  
PUSH SWITCH  
AVAILABLE

**PB  
SHOWN**

The Provençal wall lights, made of cast brass, is a simple elegant wall light based upon a simple candle stick design, popular in 19th century France. These lights work well in larger spaces where a less ornate piece, with a tall yet shallow depth fixture is needed. Available in all our finishes with a number of shade options available to suit your interior scheme. Can be specified with an optional wall plate mounted push switch.

**Wattage:** 1 x 40w ES

**WITHOUT SHADE**

**Height:** 500mm / 19.7"

**Width:** 150mm / 4.2"

**Depth:** 200mm / 7.8"

**WITH SHADE**

**Height:** 600mm / 23.6"

**Width:** 200mm / 7.9"

**Depth:** 280mm / 11"



## Windsor Table Lamp (Short) (803)



**PB  
SHOWN**

Wattage: 1 x 100w ES

**WITHOUT SHADE**

Height: 600mm / 23.3"

Width: 130mm / 5.2"

Depth: 130mm / 5.2"

**WITH SHADE**

Height: 810mm / 31.75"

Width: 400mm / 15.75"

Depth: 400mm / 15.75"

The Windsor table lamps made of machined brass with colonial influenced details. Featuring an elegant fluted lower stem and heavy cast ball detail to the upper stem. Available in all our finishes with shades to suit your taste and two heights available. They are supplied with period braided silk flex and line switch.

Finishes  
Available for  
this Collection



N



ANT



AB



PBUL

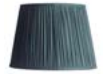


PB

Recommended  
shades



EM40SIPL  
Natural



EM40SIPL  
Blue



EM40SIPL  
Coral

Finishes  
Available for  
this Collection



N



ANT



AB



PBUL



PB

Recommended  
shades



EM40SIPL  
Natural



EM40SIPL  
Blue



EM40SIPL  
Coral



## Windsor Table Lamp (Tall) (803A)



**N  
SHOWN**

The Windsor table lamps made of machined brass with colonial influenced details. Featuring an elegant fluted lower stem and heavy cast ball detail to the upper stem. Available in all our finishes with shades to suit your taste and two heights available. They are supplied with period braided silk flex and line switch.

**Wattage:** 1 x 100w ES

**WITHOUT SHADE**

**Height:** 700mm / 27.3"

**Width:** 130mm / 5.2"

**Depth:** 130mm / 5.2"

**WITH SHADE**

**Height:** 910mm / 35.75"

**Width:** 400mm / 15.75"

**Depth:** 400mm / 15.75"





## Pullman Reading Lamp (Adjustable Height) (812)



**ANT  
SHOWN**

Wattage:	1 x 60w ES	
<b>WITHOUT SHADE</b>		
	<b>Max</b>	<b>Min</b>
Height:	810mm 31.9"	575mm 22.75"
Width:	143mm / 5.6"	
Depth:	143mm / 5.6"	
<b>WITH SHADE</b>		
	<b>675mm</b>	<b>900mm</b>
Height:	26.7"	35.5"
Width:	300mm / 11.8"	
Depth:	300mm / 11.8"	

The Pullman Lamp is modelled from the lighting used throughout the 1930's and 1940's Pullman railway cars, specifically in dining cars. The height is adjustable as required, the centre stem can be raised and dropped to suit. Available in all our finishes with shades to suit your taste. Made of solid brass to last a lifetime. They are supplied with period braided silk flex and line switch.

Finishes Available for this Collection



N



ANT



AB



PBUL



PB

Recommended shades



EM30SIPL  
Natural



EM30SIPL  
Blue



EM30SIPL  
Coral

Finishes  
Available for  
this Collection



N



ANT



AB



PBUL



PB

Recommended  
shades



EM40SIPL  
Natural



EM40SIPL  
Blue



EM40SIPL  
Coral



## Sandringham Table Lamp (814)



N  
SHOWN

Made of solid brass, the Sandringham Table Lamp offers an imposing traditionally English style. Cast and machined by hand, the Sandringham has a Regency styled Corinthian detail and is available in all our finishes. With a rich selection of soft shades available to create a distinctive style to suit your interior scheme. They are supplied with period braided silk flex and line switch.

**Wattage:** 1 x 100w ES

**WITHOUT SHADE**

**Height:** 680mm / 26.7"

**Width:** 150mm / 5.9"

**Depth:** 150mm / 5.9"

**WITH SHADE**

**Height:** 880mm / 34.7"

**Width:** 400mm / 15.75"

**Depth:** 400mm / 15.75"



## Steamer Wall Light (724)



GU10



OPTIONAL  
PUSH SWITCH  
AVAILABLE



Finishes  
Available for  
this Collection



N



ANT



AB



PBUL



PB

**PB  
SHOWN**

Wattage: 1 x 50w GU10

MAX

Height: 305mm / 12"

Width: 125mm / 5"

Depth: 440mm / 17.25"

MIN

Height: 125mm / 5"

Width: 125mm / 5"

Depth: 230mm / 9.1"

The Steamer Wall Light, is part of our Deco Nautical collection and made of heavy machined brass. Styled after lights found on the SS Columbus ocean liner C.1926 used in luxury cabins. The wall light features a heavy cast banjo joint to swing the light through 200 degrees vertically. They make ideal bedside or reading lights. Available in all our finishes and are available with an optional wall plate mounted push switch.

Finishes  
Available for  
this Collection



N



ANT



AB



PBUL



PB



## Steamer Wall Double Wall Light (724D)



GU10



OPTIONAL  
PUSH SWITCH  
AVAILABLE

ANT  
SHOWN

The Steamer Double Wall Light, is part of our Deco Nautical collection and is made of heavy machined brass. Styled after lights found on the SS Columbus ocean liner C.1926 used in luxury cabins. The wall light features two heavy cast banjo joint to swing light through 200 degrees horizontally and vertically. They make ideal bedside or reading lights. Available in all our finishes and are available with an optional wall plate mounted push switch.

**Wattage:** 1 x 50w GU10

**MAX**

**Height:** 390mm / 15.3"

**Width:** 390mm / 15.3"

**Depth:** 605mm / 23.8"

**MIN**

**Height:** 125mm / 5"

**Width:** 125mm / 5"

**Depth:** 390mm / 15.3"



## Steamer Table Lamp (724T)



Finishes  
Available for  
this Collection



N



ANT



AB



PBUL



PB

**N  
SHOWN**

**Wattage:** 1 x 50w GU10

**MAX**

**Height:** 1100mm / 43.25"

**Width:** 580mm / 22.8"

**Depth:** 580mm / 22.8"

**MIN**

**Height:** 670mm / 26.4"

**Width:** 130mm / 5.1"

**Depth:** 130mm / 5.1"

The Steamer Table Lamp, is made of made of heavy machined brass. Styled after lights found on the SS Columbus ocean liner C.1926 used in luxury cabins. The table lamp features two heavy cast banjo joint to swing light though 200 degrees horizontally and adjustable in height and angle along its 2 stems. Available in all our finishes supplied with period braided silk flex and line switch.

Finishes  
Available for  
this Collection



N



ANT



AB



PBUL



PB

Recommended  
shades



C7 Ivory



C7 White



C7 Black



## Steamer Dining Light (725)



**PB  
SHOWN**

The Steamer Dining Light, is part of our Deco Nautical collection, is made of heavy machined brass. Styled after lights found on the SS Columbus ocean liner C.1926 used in its dining suite. Available in all our finishes and with or without shades. This collection epitomizes the style of this Elizabethan luxury ship. Can be specified with an optional wall plate mounted push switch.

**Wattage:** 1 x 40w SES

**WITHOUT SHADE**

**Height:** 305mm / 12"

**Width:** 120mm / 4.5"

**Depth:** 235mm / 9.25"

**WITH SHADE**

**Height:** 400mm / 15.75"

**Width:** 185mm / 7.25"

**Depth:** 305mm / 12"



## Library Swing Arm Wall Light (816W)



GU10



OPTIONAL  
PUSH SWITCH  
AVAILABLE



Finishes  
Available for  
this Collection



N



ANT



AB



PBUL



PB

**N  
SHOWN**

**Wattage:** 1 x 50w GU10

**MAX**

**Height:** 230mm / 9.1"

**Width:** 205mm / 8.1"

**Depth:** 500mm / 19.7"

**MIN**

**Height:** 205mm / 8.1"

**Width:** 205mm / 8.1"

**Depth:** 205mm / 8.1"

The library wall lights are available in 3 styles are made of heavy machined and cast brass. The swing arm wall light features a horizontal swivel, allowing a full 180-degree swing with a banjo joint and locking teeth, to allowing the shade to move through 210 degrees on the vertical giving a vast range of task lighting. Available in all our finishes with braided flex and available with an optional push switch.

Finishes  
Available for  
this Collection



N



ANT



AB



PBUL



PB



## Library Double Adjustable Wall Light (813ADW)



OPTIONAL  
PUSH SWITCH  
AVAILABLE

**PB  
SHOWN**

The Library wall lights available in 3 styles are made of heavy machined brass. The single wall light features two heavy cast banjo joints with locking teeth, to allow the light to be positioned 200 degrees horizontally. The shade is adjustable in pitch through a further 210 degrees. Available in all our finishes with braided flex and available with an optional wall plate mounted push switch.

<b>Wattage:</b>	1 x 50w GU10
<b>MAX</b>	
<b>Height:</b>	785mm / 30.9"
<b>Width:</b>	210mm / 8.25"
<b>Depth:</b>	760mm / 29.9"
<b>MIN</b>	
<b>Height:</b>	460mm / 18.1"
<b>Width:</b>	210mm / 8.25"
<b>Depth:</b>	300mm / 11.8"





## Library Single Wall Light (813ASW)



OPTIONAL  
PUSH SWITCH  
AVAILABLE



Finishes  
Available for  
this Collection



N



ANT



AB



PBUL



PB

**ANT  
SHOWN**

**Wattage:** 1 x 50w GU10

**MAX**

**Height:** 500mm / 19.7"

**Width:** 210mm / 8.25"

**Depth:** 500mm / 19.7"

**MIN**

**Height:** 165mm / 6.5"

**Width:** 210mm / 8.25"

**Depth:** 165mm / 6.5"

The Library wall lights available in 3 styles and are made of heavy machined brass. The single wall light features two heavy cast banjo joints with locking teeth to allow the light to be positioned 200 degrees horizontally, the shade is adjustable in pitch through a further 210 degrees. Available in all our finishes with braided flex and available with an optional wall plate mounted push switch.

Finishes  
Available for  
this Collection



N



ANT



AB



PBUL



PB



## Library Lamp (816T)



GU10

**AB  
SHOWN**

The Library Lamp is made of heavy machined brass. Perfect as a reading lamp or desk lamp with its fully adjustable brass cowl. The table lamp features two heavy cast banjo joints to swing light through 200 degrees horizontally and adjustable in height and angle along its 2 stems. Available in all our finishes supplied with period braided flex. Also available are complementing wall lights to complete the collection. They are supplied with period braided silk flex and line switch.

<b>Wattage:</b>	1 x 50w GU10
<b>MAX</b>	
<b>Height:</b>	1100mm / 43.25"
<b>Width:</b>	580mm / 22.8"
<b>Depth:</b>	580mm / 22.8"
<b>MIN</b>	
<b>Height:</b>	670mm / 26.4"
<b>Width:</b>	130mm / 5.1"
<b>Depth:</b>	130mm / 5.1"



## Oyster Shell Picture Light (PLSH)



OPTIONAL  
PUSH SWITCH  
AVAILABLE



Finishes  
Available for  
this Collection



N



ANT



AB



PBUL



PB

**PB  
SHOWN**

Wattage: 1 x 25w G9

MAX

Height: 265mm / 10.4"

Width: 145mm / 5.75"

Depth: 405mm / 16.4"

MIN

Height: 140mm / 5.5"

Width: 145mm / 5.75"

Depth: 275mm / 10.9"

Oyster Shell Picture Light made of solid brass, using a lost wax casting from a hand carved Oyster shell with cast brass banjo joints to adjust. The Oyster shell takes a G9 LED bulb for low energy use and plenty of light. Beautifully handmade and finished to your choice. The Oyster effectively lights wall hung pictures and makes a unique feature to your wall. Also ideal as a menu light, the oyster shell picture light can be specified with an optional wall plate mounted push switch.

Finishes  
Available for  
this Collection



N



ANT



AB



PBUL



PB



## Oyster Shell Single Adjustable Wall Light (SHW1)



OPTIONAL  
PUSH SWITCH  
AVAILABLE

**AB  
SHOWN**

Oyster Shell Adjustable Wall Light made of solid brass, using a lost wax casting from a hand carved Oyster shell. With cast brass banjo joints to adjust and swivel and knuckle joint to articulate the shade through 90 degrees and rotate through 350 degrees. The Oyster shell takes a G9 LED bulb for low energy use and plenty of light. Beautifully handmade and finished to your choice. The Oyster Wall Lights make ideal reading lights and work beautifully as bedside wall lights. Can be specified with an optional wall plate mounted push switch.

<b>Wattage:</b>	1 x 25w G9
<b>MAX</b>	
<b>Height:</b>	300mm / 11.9"
<b>Width:</b>	145mm / 5.75"
<b>Depth:</b>	470mm / 18.5"
<b>MIN</b>	
<b>Height:</b>	180mm / 7.1"
<b>Width:</b>	145mm / 5.75"
<b>Depth:</b>	265mm / 10.4"



## Oyster Shell Double Adjustable Wall Light (SHW2)



OPTIONAL  
PUSH SWITCH  
AVAILABLE



Finishes  
Available for  
this Collection



N



ANT



AB



PBUL



PB

**N**  
**SHOWN**

Wattage: 1 x 25w G9

MAX

Height: 500mm / 19.7"

Width: 145mm / 5.75"

Depth: 700mm / 27.6"

MIN

Height: 340mm / 13.4"

Width: 145mm / 5.75"

Depth: 330mm / 13"

Oyster Shell Double Adjustable Wall Light is made of solid brass, using a lost wax casting from a hand carved Oyster shell, with cast brass banjo joints to adjust both arms and a swivel and knuckle joint to articulate the shade through 90 degrees and rotate through 350 degrees. The Oyster shell takes a G9 LED bulb for low energy use and plenty of light. Beautifully handmade and finished to your choice. The Oyster Wall Lights make ideal reading lights and work beautifully as bedside wall lights. Can be specified with an optional wall plate mounted push switch.

Finishes  
Available for  
this Collection



N



ANT



AB



PBUL



PB



BZ



C



## Gatsby Wall Light (Small) (850)



CANDLE

ANT  
SHOWN

Small Gatsby Art Deco Wall Light. Made of cast brass and featuring leaded glass rods. The Gatsby Art Deco wall lights are a stunning feature piece. Beautifully detailed and available finished to suit your taste. Available in 3 sizes.

**Wattage:** 1 x 60w SES  
**Height:** 340mm / 13.4"  
**Width:** 100mm / 3.9"  
**Depth:** 110mm / 4.3"



## Gatsby Wall Light (Large) (850A)



Finishes  
Available for  
this Collection



N



ANT



AB



PBUL



PB



BZ



C

**N  
SHOWN**

**Wattage:** 3 x 40w SES  
**Height:** 650mm / 25.6"  
**Width:** 100mm / 3.9"  
**Depth:** 110mm / 4.3"

Large Gatsby Art Deco Wall Light. Made of cast brass and featuring leaded glass rods. The Gatsby Art Deco wall lights are a stunning feature piece. Beautifully detailed and available finished to suit your taste. Available in 3 sizes.

Finishes  
Available for  
this Collection



N



ANT



AB



PBUL



PB



BZ



C



## Gatsby Wall Light (Medium) (850B)



CANDLE

**AB  
SHOWN**

Gatsby Art Deco Wall Light. Made of cast brass and featuring leaded glass rods. The Gatsby Art Deco wall lights are a feature piece in its own right. Beautifully detailed and available finished to suit your taste. Available in 3 sizes.

**Wattage:** 2 x 40w SES  
**Height:** 490mm / 19.3"  
**Width:** 100mm / 3.9"  
**Depth:** 110mm / 4.3"





## Deco Square Bulkhead Light (Small) (900S)



Finishes  
Available for  
this Collection



N



ANT



AB



PBUL



PB

**AB  
SHOWN**

**Wattage:** 2 x 60w SES  
**Height:** 285mm / 11.25"  
**Width:** 145mm / 5.8"  
**Depth:** 115mm / 4.5"

Made of solid brass with frosted glass. The Deco bulkhead lights are available in 4 sizes and rated IP44 for bathroom Zone 2 use, if required. Suitable for wall and ceiling mounting. These elegant Art Deco styled lights can be used in a period or contemporary setting. Ideal for areas with low ceiling heights.

Finishes  
Available for  
this Collection



N



ANT



AB



PBUL



PB



## Deco Square Bulkhead Light (Medium) (900M)



CANDLE

**N  
SHOWN**

Made of solid brass with frosted glass. The Deco bulkhead lights are available in 4 sizes and are rated IP44 for bathroom Zone 2 use, if required. Suitable for wall and ceiling mounting. These elegant Art Deco styled lights can be used in a period or contemporary setting. Ideal for areas with low ceiling heights.

**Wattage:** 2 x 60w SES  
**Height:** 455mm / 17.9"  
**Width:** 145mm / 5.8"  
**Depth:** 115mm / 4.5"



## Deco Square Bulkhead Light (Large) (900L)



Finishes  
Available for  
this Collection



N



ANT



AB



PBUL



PB

**PBUL  
SHOWN**

**Wattage:** 4 x 60w SES  
**Height:** 605mm / 23.6"  
**Width:** 145mm / 5.8"  
**Depth:** 115mm / 4.5"

Made of solid brass with frosted glass. The Deco bulkhead lights are available in 4 sizes and are rated IP44 for bathroom Zone 2 use, if required. Suitable for wall and ceiling mounting. These elegant Art Deco styled lights can be used in period or contemporary setting. Ideal for areas with low ceiling heights.

Finishes  
Available for  
this Collection



N



ANT



AB



PBUL



PB



## Deco Square Bulkhead Light (900SQ)



CANDLE

**PB  
SHOWN**

Made of solid brass with frosted glass. The Deco bulkhead lights are available in 4 sizes and are rated IP44 for bathroom Zone 2 use, if required. Suitable for wall and ceiling mounting. These elegant Art Deco styled lights can be used in period or contemporary setting. Ideal for areas with low ceiling heights.

**Wattage:** 2 x 60w SES  
**Height:** 280mm / 11"  
**Width:** 280mm / 11"  
**Depth:** 115mm / 4.5"



## Deco Round Bulkhead Light (Small) (900RS)



CANDLE



Finishes  
Available for  
this Collection



N



ANT



AB



PBUL



PB

**N**  
**SHOWN**

**Wattage:** 2 x 40w SES  
**Height:** 100mm / 4"  
**Width:** 305mm / 12"  
**Depth:** 305mm / 12"

Made of solid brass with frosted glass. The round Deco bulkhead lights are available in 2 sizes and are rated IP44 for bathroom Zone 2 use, if required. Suitable for wall and ceiling mounting. These elegant Art Deco styled lights can be used in period or contemporary setting. Ideal for areas with low ceiling heights.

Finishes  
Available for  
this Collection



N



ANT



AB



PBUL



PB



## Deco Round Bulkhead Light (Large) (900RL)



CANDLE

**AB  
SHOWN**

Made of solid brass with frosted glass. The large round bulkhead lights are available in 2 sizes and are rated IP44 for bathroom Zone 2 use, if required. Suitable for wall and ceiling mounting. These elegant Art Deco styled lights can be used in period or contemporary setting. Ideal for areas with low ceiling heights.

**Wattage:** 4 x 40w SES  
**Height:** 100mm / 4.1"  
**Width:** 345mm / 13.6"  
**Depth:** 345mm / 13.6"



## Ripple Bulkhead Light (Small) (901S)



Finishes  
Available for  
this Collection



N



ANT



AB



PBUL



PB

**PB  
SHOWN**

**Wattage:** 1 x 60w SES  
**Height:** 260mm / 10.25"  
**Width:** 115mm / 4.5"  
**Depth:** 115mm / 4.5"

Made of solid brass with frosted glass. The ripple bulkhead lights are available in 4 sizes and are rated IP44 for bathroom Zone 2 use, if required. Suitable for wall and ceiling mounting. With a rippled brass trim around its base, the collection has a simple elegance that can be used in period or contemporary setting. Ideal for areas with low ceiling heights.

Finishes  
Available for  
this Collection



N



ANT



AB



PBUL



PB



## Ripple Bulkhead Light (Medium) (901M)



GOLF BALL

ANT  
SHOWN

Made of solid brass with frosted glass. The ripple bulkhead lights are available in 4 sizes and are rated IP44 for bathroom Zone 2 use, if required. Suitable for wall and ceiling mounting. With a rippled brass trim around its base, The collection has a simple elegance that can be used in period or contemporary setting. Ideal for areas with low ceiling heights.

**Wattage:** 2 x 60w SES  
**Height:** 470mm / 18.5"  
**Width:** 115mm / 4.5"  
**Depth:** 115mm / 4.5"





## Ripple Bulkhead Light (Large) (901L)



Finishes  
Available for  
this Collection



N



ANT



AB



PBUL



PB

**N  
SHOWN**

**Wattage:** 4 x 40w SES  
**Height:** 610mm / 24"  
**Width:** 115mm / 4.5"  
**Depth:** 115mm / 4.5"

Made of solid brass with frosted glass. The ripple bulkhead lights are available in 4 sizes and are rated IP44 for bathroom Zone 2 use, if required. Suitable for wall and ceiling mounting. With a rippled brass trim around its base. The collection has a simple elegance that can be used in period or contemporary setting. Ideal for areas with low ceiling heights.

Finishes  
Available for  
this Collection



N



ANT



AB



PBUL



PB



## Ripple Square Bulkhead Light (901SQ)



CANDLE

**AB  
SHOWN**

Made of solid brass with frosted glass. The ripple bulkhead lights are available in 4 sizes and are rated IP44 for bathroom Zone 2 use, if required. Suitable for wall and ceiling mounting. With a rippled brass trim around its base, the collection has a simple elegance that can be used in period or contemporary setting. Ideal for areas with low ceiling heights.

**Wattage:** 2 x 60w SES  
**Height:** 315mm / 11.5"  
**Width:** 315mm / 11.5"  
**Depth:** 115mm / 4.5"



## Ripple Round Bulkhead Light (Small) (901RS)



Finishes  
Available for  
this Collection



N



ANT



AB



PBUL



PB

**PB  
SHOWN**

**Wattage:** 2 x 40w SES  
**Height:** 105mm / 4.1"  
**Width:** 255mm / 10"  
**Depth:** 255mm / 10"

Made of solid brass with frosted glass. The round Ripple bulkhead lights are available in 2 sizes and are rated IP44 for bathroom Zone 2 use, if required. Suitable for wall and ceiling mounting. These elegant Art Deco styled lights can be used in period or contemporary setting. Ideal for areas with low ceiling heights.

Finishes  
Available for  
this Collection



N



ANT



AB



PBUL



PB



## Ripple Round Bulkhead Light (Large) (901RL)



CANDLE

**AB  
SHOWN**

Made of solid brass with frosted glass. The large round Ripple bulkhead lights are available in 2 sizes and are rated IP44 for bathroom Zone 2 use, if required. Suitable for wall and ceiling mounting. These elegant Art Deco styled lights can be used in period or contemporary setting. Ideal for areas with low ceiling heights.

**Wattage:** 4 x 40w SES  
**Height:** 100mm / 4.1"  
**Width:** 345mm / 13.6"  
**Depth:** 345mm / 13.6"



## The Charleston Pendant (727P)



T45



Finishes  
Available for  
this Collection



N



ANT



AB



PBUL



PB

Optional  
Available Glass



Clear



Opal

**CLEAR  
SHOWN**

**N  
SHOWN**

**Wattage:** 1 x 40w ES  
**Height:** 280mm / 11"  
**Width:** 245mm / 9.7"  
**Depth:** 245mm / 9.7"

The Charleston Collection is made of solid brass. A simple mid-century style that suits both traditional and period schemes alike. Available in five finishes supplied with clear or opal glass, it is designed to suit a T45 Style filament bulb available separately (LB5). The hanging and flush versions can be used outside in covered areas.

Finishes  
Available for  
this Collection



N



ANT



AB



PBUL



PB

Optional  
Available Glass



Clear



Opal



## The Charleston Wall Light (727W)



T45



OPTIONAL  
PUSH SWITCH  
AVAILABLE

**CLEAR  
SHOWN**

**AB  
SHOWN**

The Charleston Collection is made of solid brass. A simple mid-century style that suits both traditional and period schemes alike. Available in five finishes supplied with clear or opal glass, it is designed to suit a T45 Style filament bulb available separately (LB5). The hanging and flush versions can be used outside in covered areas. The wall light is available with an optional push switch for independent switching.

**Wattage:** 1 x 40w SES  
**Height:** 500mm / 19.7"  
**Width:** 180mm / 7.1"  
**Depth:** 320mm / 12.6"



## The Charleston Flush Light (727F)



T45



Finishes  
Available for  
this Collection



N



ANT



AB



PBUL



PB

Optional  
Available Glass



Clear



Opal

**ANT  
SHOWN**

**OPAL  
SHOWN**

**Wattage:** 1 x 40w SES  
**Height:** 295mm / 11.6"  
**Width:** 180mm / 7.1"  
**Depth:** 180mm / 7.1"

The Charleston Collection is made of solid brass. A simple mid-century style that suits both traditional and period schemes alike. Available in five finishes supplied with clear or opal glass, it is designed to suit a T45 Style filament bulb available separately (LB5). The hanging and flush versions can be used outside in covered areas. The Flush light is IP44 rated and suitable for use in Zone 2 Bathroom areas.

Finishes  
Available for  
this Collection



N



ANT



AB



PBUL



PB



## The Annapolis Pendant (729P)



ANT  
SHOWN

The Annapolis Collection made of solid brass is ideal for creating a warm ambience to your lighting scheme. A mix of nautical and industrial styles. The Annapolis collection is a unique transitional design that suits both traditional and contemporary schemes alike. Available in five finishes, the metal shade exposes the top filaments of the bulb to create a warm ambient glow and a focused down light.

**Wattage:** 1 x 40w ES  
**Height:** 580mm / 22.8"  
**Width:** 180mm / 7.1"  
**Depth:** 180mm / 7.1"





## The Annapolis Wall Light (729W)



OPTIONAL  
PUSH SWITCH  
AVAILABLE



Finishes  
Available for  
this Collection



N



ANT



AB



PBUL



PB

**PB  
SHOWN**

**Wattage:** 1 x 40w ES  
**Height:** 455mm / 17.9"  
**Width:** 245mm / 9.7"  
**Depth:** 340mm / 13.4"

The Annapolis Collection made of solid brass is ideal for creating a warm ambience to your lighting scheme. A mix of nautical and industrial styles. The Annapolis collection is a unique transitional design that suits both traditional and contemporary schemes alike. Available in five finishes, the metal shade exposes the top filaments of the bulb to create a warm ambient glow and a focused down light. The wall light is available with an optional push switch for independent switching.

Finishes  
Available for  
this Collection



N



ANT



AB



PBUL



PB



## The Annapolis Flush Light (729F)



**AB  
SHOWN**

The Annapolis Collection made of solid brass is ideal for creating a warm ambience to your lighting scheme. A mix of nautical and industrial styles. The Annapolis collection is a unique transitional design that suits both traditional and contemporary schemes alike. Available in five finishes, the metal shade exposes the top filaments of the bulb to create a warm ambient glow and a focused down light.

**Wattage:** 1 x 40w ES  
**Height:** 280mm / 11"  
**Width:** 245mm / 9.7"  
**Depth:** 245mm / 9.7"



## Blenheim Tube Picture Light 13" (BL13)



CANDLE



Finishes  
Available for  
this Collection



N



ANT



AB



PBUL



PB



BZ



C

**BZ  
SHOWN**

**Wattage:** 2 x 25w SES  
**Height:** 175mm / 21.7"  
**Width:** 340mm / 13.4"  
**Depth:** 250mm / 9.8"

Blenheim 13" Tube Picture Light made of solid brass, cast brass fluted end caps and back plate with cast brass banjo joints to adjust. The Blenheim are museum quality picture lights, perfectly suited to highlighting artwork. The Blenheim range of picture lights are replicas of those used in Blenheim Palace, England. Beautifully handmade in solid brass and finished to your choice.

Finishes  
Available for  
this Collection



N



ANT



AB



PBUL



PB



BZ



C



## Blenheim Tube Picture Light 25" (BL25)



CANDLE



**PB  
SHOWN**

Blenheim 25" Tube Picture Light made of solid brass, cast brass fluted end caps and back plate with cast brass banjo joints to adjust. These heavy quality picture lights beautify highlight works of art. The Blenheim range of picture lights are replicas of those used in Blenheim Palace, England. Beautifully handmade in solid brass and finished to your choice.

**Wattage:** 4 x 25w SES  
**Height:** 175mm / 21.7"  
**Width:** 640mm / 21.7"  
**Depth:** 250mm / 21.7"  
**Arm**  
**Spacing:** 300mm / 21.7"



## Blenheim Trough Picture Light 9” (BT9)



CANDLE



Finishes  
Available for  
this Collection



N



ANT



AB



PBUL



PB



C

**PBUL  
SHOWN**

**Wattage:** 2 x 25w SES  
**Height:** 205mm / 8.1”  
**Width:** 228mm / 9”  
**Depth:** 310mm / 12.2”

Blenheim 9” Trough Picture Light, made of solid brass with cast brass backplate with banjo joints to adjust. These period trough picture lights are handmade and finished to suit your taste. This period trough picture light is based upon originals used in Blenheim Palace. These heavy quality picture lights that beautify and highlight works of art.

Finishes  
Available for  
this Collection



N



ANT



AB



PBUL



PB



BZ



C



## Blenheim Trough Picture Light 13" (BT13)



ANT  
SHOWN

Blenheim 13" Trough Picture Light, made of solid brass with cast brass backplate with banjo joints to adjust. These period trough picture lights are handmade and finished to suit your taste. This period trough picture light is based upon originals used in Blenheim Palace. These heavy quality picture lights beautify highlight works of art.

**Wattage:** 2 x 25w SES  
**Height:** 205mm / 8.1"  
**Width:** 335mm / 13.2"  
**Depth:** 310mm / 12.2"



## Blenheim Trough Picture Light 24" (BT24)



Finishes Available for this Collection



N



ANT



AB



PBUL



PB



BZ



C

**N  
SHOWN**

**Wattage:** 4 x 25w SES  
**Height:** 205mm / 8.1"  
**Width:** 615mm / 24.2"  
**Depth:** 310mm / 12.2"  
**Arm**  
**Spacing:** 300mm / 11.8"

Blenheim 24" Trough Picture Light, made of Solid Brass with cast brass back plate with banjo Joints to adjust. Our Traditional Trough picture lights are handmade and finished to suit your taste. This period trough picture light is based upon originals used in Blenheim Palace, these heavy quality picture lights beautify highlight works of art. Suitable for using with larger works of art where a bigger profile picture light adds extra drama to a piece.

Finishes  
Available for  
this Collection



ANT



AB



PBUL



PB



## Traditional Spot Light (815)



GU10



**AB  
SHOWN**

Traditional Spot Light (Single) made of solid brass. Our traditional spot lights suit our range of period lights and are suitable where task lighting is required. Available to match all our period finished lights they take a GU10 bulb suitable for an LED light source. The spotlights are mounted on a swivel and pivot joint to allow you to highlight as required.

**Wattage:** 1 x 35w GU10  
**Height:** 130mm / 5.1"  
**Width:** 100mm / 3.9"  
**Depth:** 100mm / 3.9"





## Traditional Spot Light Triple Cluster (815C3)



GU10



**PB  
SHOWN**

**Wattage:** 3 x 35w GU10  
**Height:** 170mm / 6.7"  
**Width:** 360mm / 14.2"  
**Depth:** 360mm / 14.2"

Traditional Spot Light (Triple Cluster) made of solid brass, Our traditional spot lights suit our range of period lights and are suitable where task lighting is required. Available to match all our period finished lights they take a GU10 bulb suitable for an LED light source. The spotlights are mounted on a swivel and pivot joint to allow you to highlight as required.

Finishes  
Available for  
this Collection



ANT



AB



PBUL



PB

Finishes  
Available for  
this Collection



ANT



AB



PBUL



PB



## Traditional Spot Light Triple Bar (815B3)



GU10



**PB  
SHOWN**

Traditional Spot Light (Triple Bar) made of solid brass, Our traditional spotlights suit our range of period lights and are suitable where task lighting is required. Available to match all our period finished lights they take a GU10 bulb suitable for an LED light source. The spotlights are mounted on a swivel and pivot joint to allow you to highlight as required. Ideal for kitchen and bathrooms (outside of Zone 1 and 2).

**Wattage:** 3 x 35w GU10  
**Height:** 170mm / 6.7"  
**Width:** 630mm / 24.8"  
**Depth:** 240mm / 9.4"



## Downloads



[www.limehouselighting.com/brochure-download](http://www.limehouselighting.com/brochure-download)



US Customers



[www.limehouselighting.co.uk/brochure-download](http://www.limehouselighting.co.uk/brochure-download)



UK/EU Customers

View other available brochures / order finish samples





## Optional Card Shades



D6(G) Gold



D6(G) Black



D6(G) Ivory



D6(G) White



D6 White



D6 Black



D6 Ivory



CY6 Black



CY6 Ivory



CY6 White



C6 Black



C6 Ivory



C6 Red

Model	D6(G) & D6	CY6	C6
Height:	170mm / 6.7"	160mm / 6.3"	110mm / 4.3"
Width:	155mm / 6.1"	100mm / 3.9"	150mm / 4.6"
Depth:	155mm / 6.1"	100mm / 3.9"	150mm / 4.6"
Fitment:	Clip for Golf Ball	Clip for Golf Ball	Clip for Golf Ball



## Optional Fabric Shades



SE40SIPL Natural



SE40SIPL Coral



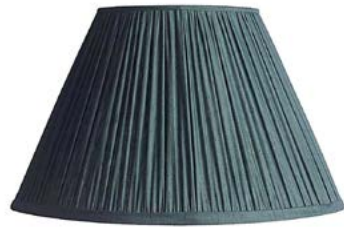
SE40SIPL Blue



EM30SIPL Natural



EM30SIPL Coral



EM30SIPL Blue

**Model** SE40SIPL  
**Height:** 275mm / 10.8"  
**Width:** 400mm / 15.75"  
**Depth:** 400mm / 15.75"  
**Fitment:** SES Gimbal

**EM30SIPL**  
205mm / 8.1"  
300mm / 11.8"  
300mm / 11.8"  
SES Gimbal



# Terms & Conditions

## DEFINITIONS

- 1.1 “The company” - means The Limehouse Lamp Company Limited
- 1.2 “The customer” - means the customer to the company, whether an individual, partnership, a company or their servants or agents.
- 1.3 “The Contract” - means any contract for sale of goods by the company to the customer.
- 1.4 “The Goods” - means any goods which the Company supplies in accordance with these conditions including parts and components of or materials incorporated in them.

## EXISTENCE OF CONTRACT

- 2.1 These conditions shall be incorporated in the contract to the exclusion of any terms or conditions stipulated or referred to by the Customer.
- 2.2 The conditions printed on the price list, from time to time, will be incorporated in the Contract in addition to the conditions herein.
- 2.3 No variations or amendments of this contract shall be binding on the company unless confirmed by it in writing.

## PRICES

- 3.1 The price of the goods shall be subject to VAT at the prevailing rate and the company shall have the right to adjust its prices for any increase in any costs of any kind arising for any reason after the contract date.
- 3.2 Carriage will be charged in accordance with the Company's terms and conditions of business printed on the company's price lists from time to time.

## PAYMENT

- 4.1 All invoices are payable nett within 30 days of the date of the Company's invoice and the customer shall pay interest on any overdue amount from the date on which payment was due to that on which payment it is made (whether before or after judgment) on a daily basis at a rate of 4% per annum over the base rate from time to time

quoted by HSBC Bank PLC and reimburse to the company any all costs and expenses (including legal costs) incurred in the collection of any overdue amount.

## TITLE

- 5.1 Notwithstanding the earlier passing of risk the Company shall remain sole absolute owner of the Goods until such time as the agreed price of the Goods shall have been paid to the Company by the Customer. Until such time the Customer shall be the bailee of the Goods for the Company
- 5.2 The Company shall be entitled at any time before title passes to repossess and dismantle (without being liable for any damage by doing so) all or any of the Goods and for that purpose enter any premises of the Customer.
- 5.3 If a receiver or manager or any other person acting for the customer fails to return any Goods the property of the Company, the return of which has been demanded in accordance with these conditions, he shall pay the Company as agreed and liquidated damages for detinue and/or conversion, treble the agreed price of the Goods.

## RISK AND DELIVERY

- 6.1 Goods are delivered to the Customer when the company makes them available to the customer or any agent of the Customer or any carrier (who shall be the customer's agent whoever pays his charges) at the Company's premises or other delivery point agreed by the Company and risk in the goods passes when the goods are delivered to the customer.
- 6.2 The Company shall not be liable for any penalty loss injury damage or expense arising from the delay in delivery or performance from any cause at all nor shall any such delay or failure entitle the customer to refuse to accept any delivery or performance of or repudiate the Contract.
- 6.3 Any dates quoted by the Company for delivery of the Goods are approximate only and shall not form part of the Contract and the Customer acknowledges that in the performance expected of the Company no regard has been paid to any quoted delivery dates.

6.4 If the Customer fails to take delivery of the Goods or any part of them on the due date and fails to provide any instructions documents licenses consents or authorisations required to enable the Goods to be delivered on the due date, the Company shall be entitled upon giving written notice to the Customer to store or arrange for the storage of Goods, and then risk in the goods shall pass to the customer delivery shall be deemed to have taken place and the Customer shall pay the Company all costs and expenses including storage and insurance charges arising from its failure.

## CLAIMS NOTIFICATION

7.1 Any claim for non-delivery of any Goods shall be notified in writing by the customer to the company within 10 days of date of the Companies invoice.

7.2 Any claim that any Goods have been delivered damaged or not of correct quantity or do not comply with their description shall be notified by the Customer to the Company within 7 days of their delivery.

7.3 Any alleged defect shall be notified by the Customer in writing within 7 days of delivery of the Goods or in the case of any defect which is not reasonably apparent on inspection within 7 days of the defect coming to the Customers attention and in any event within one month from the date of delivery.

7.4 The Company shall have no liability with regard to any claim in respect of which the Customer has not complied with the provisions of this condition.

## SCOPE OF CONTRACT

8.1 Under no circumstances shall the Company have any liability of whatever kind for:

8.2 Any defects resulting from wear and tear accident improper use by the Customer or use by the Customer otherwise than in accordance with the instructions or advice of the Company or the manufacturer of any Goods or neglect or from any instructions or materials provided by the Customer.

8.3 Any goods which have been adjusted modified or repaired otherwise than by the Company.

8.4 Any technical information recommendations statements or advice furnished by the Company its servants or agents not given in writing in response to a specific written request from the Customer before the Contract is made.

## EXTENT OF LIABILITY

9.1 The Company shall have no liability to the Customer (other than liability for death or

personal injury resulting from the Company's negligence) for any loss or damage of any nature arising from any breach of any express or implied warranty or condition of the Contract or any negligence, breach of statutory or other duty on the part of the Company or in any other way out of or in connection with the performance or purported performance of or failure to perform the Contract except in accordance with this condition.

9.2 If the customer establishes that any Goods have not been delivered have been delivered damaged, are not of the correct quantity, do not comply with their description or are defective, the Company shall, as its option replace with similar Goods any Goods which are missing, lost or damaged, do not comply with their description or which are defective allow the Customer credit for their invoice value or repair any damaged Goods.

9.3 Where the Company is liable in accordance with this condition in respect of only some or part of the Goods the Contract shall remain in full force and effect in respect of the other or other parts of the goods and no set-off or other claim shall be made by the customer against or in respect of such other or other parts of the Goods.

9.4 No claim against the Company shall be entertained for any defect arising from adjustments alterations or other work which has been done to the goods by any person other than the Company.

9.5 In no circumstances shall the liability of the Company to Customer under this condition exceed the invoice value of the goods.

## FORCE MAJOR

10.1 The Company shall not be liable for any failure in the performance of any of its obligations under the Contract caused by factors outside its control.

## LAW & CONSTRUCTION

11.1 The Contract shall be governed by English Law and the Customer consents to the exclusive jurisdiction of the English courts in all matters regarding the Contract.

11.2 If any provision of these conditions is held by any court or other competent authority to be void or unenforceable in whole or in part these conditions shall continue to be valid as to the other provisions thereof and the remainder of the affected provision.

11.3 The headings of conditions are for convenience only and shall not affect their interpretation.



## THE LIMEHOUSE LAMP COMPANY LTD

---

The Limehouse Lamp Company (UK Head Office)

Units 32/33 Mackley Industrial Estate, Henfield Road, Small Dole, West Sussex BN5 9XR

T: 00(44)1273 497070 F: 00(44)1273 497071

E: [info@limehouselighting.com](mailto:info@limehouselighting.com) W: [www.limehouselighting.co.uk](http://www.limehouselighting.co.uk)

The Limehouse Lamp Company (USA)

5113 Forsyth Commerce Rd, Orlando, FL 32807

T: (844) 857-6337 F: (407) 894-2215

E: [ussales@limehouselighting.com](mailto:ussales@limehouselighting.com) W: [www.limehouselighting.com](http://www.limehouselighting.com)